

# **Ozone Widget Framework**

## **Configuration Guide**

**December 21, 2012**

**Publication/Revision History**

<b>Release</b>	<b>Date</b>
Revised – OWF 7	December 21, 2012
Revised – OWF 6	September 28, 2012
Revised – OWF 5	June 29, 2012
Initial Document – OWF 4	March 30, 2012

# Contents

<b>1 Introduction</b>	<b>1</b>
1.1 Objectives	1
1.2 Document Scope	1
1.2.1 Related Documents	1
<b>2 OWF Overview</b>	<b>2</b>
2.1 Purpose	2
2.2 Basic Architecture	2
2.3 Dependencies	2
2.4 Components	2
2.4.1 Ozone Widget Framework (OWF) Web Application	2
2.4.2 CAS Web Application	2
2.4.3 Pluggable Security	3
2.4.3.1 Default Authentication	3
2.4.3.2 X509-Only Security	3
2.4.3.3 CAS-Only Security	3
2.4.3.4 X509/LDAP	4
2.4.3.5 Basic Spring Login	4
2.4.3.6 OWF Security Project	4
2.4.4 Sample Widgets	4
<b>3 Installation</b>	<b>7</b>
3.1 Dependencies	7
3.2 Supported Browsers	7
3.3 OWF Bundle Description	7
3.4 Default Installation	8
3.4.1 Installing User PKI Certificates	9
3.5 Custom Installation	9
3.5.1 Database Setup	9
3.5.1.1 Using Oracle	11
3.5.1.2 Using MySQL	12
3.5.1.3 Using PostgreSQL	14

3.5.1.4 Using SQL Server .....	15
3.5.2 Security Setup .....	16
3.5.2.1 Installing the Security Module.....	16
3.5.3 Operating OWF From Different/Multiple Ports .....	16
3.5.4 Adding Marketplace or Metrics Service To OWF .....	17
3.5.5 Server Certificate Creation and Installation .....	18
3.5.5.1 Generating a New Self-Signed Server Certificate .....	18
3.5.5.2 Configuring OWF For a Different Truststore/Keystore .....	18
<b>4 Configuration.....</b>	<b>20</b>
4.1 Default Configuration .....	20
4.1.1 Adding Users/Roles/Groups .....	20
4.1.2 Help Content Configuration .....	22
4.1.2.1 Changing the Location of Help .....	22
4.2 Custom Configuration .....	22
4.2.1 OwfConfig.groovy File .....	23
4.2.1.1 Custom log4jWatchTime.....	25
4.2.1.2 Enabling Marketplace Widget Approval .....	26
4.2.1.3 Widget Load Times .....	26
4.2.1.4 Using Shims .....	27
4.2.1.5 Custom Last Login Date .....	27
4.2.1.6 Custom Show Access Alert.....	28
4.2.1.7 Custom "Data-Entry" Message.....	28
4.2.1.8 Custom Logout .....	29
4.2.1.9 Custom "Auto Save" Interval .....	30
4.2.1.10 Custom Help File Types .....	30
4.2.1.11 Enabling Ozone Metrics Service.....	30
4.2.1.11.1 Configuring the Metrics Widget in OWF .....	30
4.2.1.11.2 Viewing the Metrics Widget in OWF .....	31
4.2.2 Custom Logging Functions.....	32
4.2.3 Audit Logging.....	33
4.2.3.1 Configuring Audit Log Levels.....	33
4.2.3.2 Sign-in Events.....	34
4.2.3.3 Logout Events .....	35
4.2.3.4 Auditing Login Attempts From Custom Security Modules .....	36

4.2.4 Server Settings.....	36
4.2.5 CASSpringOverrideConfig.xml File.....	37
4.2.6 JVM Memory Settings.....	38
<b>5 Custom Banners .....</b>	<b>39</b>
5.1 Configuring Custom Banners.....	39
5.2 Enabling Custom Banners .....	39
<b>6 OWF Security .....</b>	<b>41</b>
6.1 Basic Security Concepts and OWF .....	41
6.2 Requirements for Customizing Security.....	42
6.3 Custom Security Logout.....	43
6.4 Production Deployments .....	43
6.5 Sample Plugin Summary .....	43
6.5.1 Default Authentication: CAS + X509.....	44
6.5.2 Basic Login + LDAP .....	44
6.5.3 X509 Only Security.....	44
6.5.4 CAS Only Security.....	44
6.5.4.1 Customizing CAS.....	45
6.5.4.2 CAS Modifications for use with Marketplace .....	45
6.5.5 X509 with LDAP.....	45
6.5.6 Basic Spring Login .....	46
6.6 Installing the Security Module .....	46
6.6.1 X509-Only Specific Instructions .....	47
6.6.2 CAS-Only Specific Instructions .....	47
6.6.3 X509/LDAP .....	48
6.7 Custom Security and Sample Source Code.....	49
6.8 OWFUserDetails.....	49
6.8.1 OWFUserDetailsImpl .....	49
6.8.2 OWFUserDetailsImpl .....	50
6.8.3 OwfGroupImpl .....	51
6.8.4 GrantedAuthorityImpl .....	51
<b>7 Themes.....</b>	<b>52</b>
7.1 Overview .....	52
7.2 Changing the default theme .....	52

7.3 Creating and modifying themes .....	52
7.3.1 Prerequisites .....	52
7.3.2 Layout of themes directory .....	53
7.4 Creating a New Theme .....	56
7.5 Making Themes Usable Outside of owf.war .....	58
7.6 Non-themable OWF Components .....	59
7.7 Themable OWF Components .....	59
7.8 Enabling OWF Customization Configuration.....	61
<b>8 Customizing OWF JavaScript .....</b>	<b>62</b>
8.1 Configuring the External JavaScript Files .....	63
8.2 Deploy or Recreate External JavaScript/CSS .....	63
8.3 JavaScript/CSS Bundle Naming Convention .....	64
8.4 Toolbar Customization Walkthrough.....	65
8.4.1 Toolbar Overview .....	65
8.4.2 Customizing the Toolbar Logo.....	66
8.4.3 Adding/Removing Toolbar Components.....	66
8.4.4 Customizing the Toolbar User Menu .....	68
8.5 Sample Customization .....	69
8.5.1 Custom CSS .....	69
8.6 Debugging JavaScript/CSS Problems .....	69
<b>Appendix A Upgrading OWF .....</b>	<b>A-1</b>
A.1 Upgrading to OWF 7.....	A-1
A.2 Prior to OWF 6.....	A-3
A.2.1 Dashboard Changes .....	A-3
A.2.2 Dashboard Conversion Requirements .....	A-3
A.2.3 Dashboard Conversions.....	A-3
A.2.4 Dashboard Inspection and Validation.....	A-4
<b>Appendix B Clustering an OWF Environment .....</b>	<b>B-1</b>
B.1 Tomcat Configuration .....	B-1
B.2 OWF Configuration .....	B-2
B.3 OS Configuration.....	B-2
B.4 Apache HTTP / Load Balancer Configuration .....	B-3
<b>Appendix C Deploying OWF to an Existing Tomcat Instance.....</b>	<b>C-1</b>

<b>Appendix D Known Issues .....</b>	<b>D-1</b>
D.1 Browser Issues.....	D-1
D.2 User Interface Issues .....	D-1
D.3 Widget Technology Issues.....	D-1
D.4 Database Issues .....	D-2
<b>Appendix E Contact Information .....</b>	<b>E-1</b>
E.1 Discussion Group .....	E-1
E.2 Additional POCs .....	E-1

## Tables

Table 1: Related Documents.....	1
Table 2: Example Widgets.....	5
Table 3: Tested Browsers .....	7
Table 4: OWF Externalized Database Properties .....	10
Table 5: Custom JVM Parameters.....	19
Table 6: Data for Metrics Widget Definition .....	31
Table 7: OWFCasBeans.xml Server Settings.....	37
Table 8: OWFLogInOutBeans.xml Server Setting .....	37
Table 9: Theme File and Folder Descriptions .....	53
Table 10: Theming Conventions .....	55
Table 11: Themable Components .....	59
Table 12: External JavaScript Files for Customizing OWF.....	62
Table 13: Custom Object Properties for a User Menu Button Item.....	68

## Figures

Figure 1: Help Button on Toolbar .....	22
Figure 2: Sign-in Information.....	27
Figure 3: Customizable Warning Message .....	28
Figure 4: Free Text-Entry Warning Area .....	29
Figure 5: Metric Widget.....	31
Figure 6: Graph Tab Displaying Date Switcher.....	32
Figure 7: Themes Directory Structure .....	53
Figure 8: Individual Black-on-White Theme Directory Structure.....	55

Figure 9: OWF Toolbar .....	65
Figure 10: OWF Logo Area .....	65
Figure 11: Detachable Toolbar .....	65
Figure 12: User Menu .....	66
Figure 13: Drop-down User Menu.....	68
Figure 14: Customized Toolbar .....	69



# 1 Introduction

## 1.1 Objectives

This guide covers topics relevant to installing and configuring the OWF. It explains extending and customizing the OWF interface and applying themes.

## 1.2 Document Scope

This guide is intended for OWF developers who wish to configure or customize an OWF instance. For the purpose of this document, a developer is understood to be someone who is comfortable unpacking and packing **WAR** files; editing JavaScript (**JS**), Cascading Style Sheets (**CSS**) and customized configuration files; and configuring OWF.

### 1.2.1 Related Documents

**Table 1: Related Documents**

Document	Purpose
User's Guide	Understanding the <b>OWF user interface</b> ; adding, deleting, modifying <b>widgets</b> and using widget <b>intents</b> ; accessing and using <b>Marketplace</b> ; creating, deleting, adding, switching, modifying <b>dashboards</b> ; using <b>stacks</b> ; defining accessibility features such as <b>high-contrast themes and keyboard navigation</b>
Administrator's Guide	Understanding <b>administrative tools</b> : adding, deleting, and editing widgets, users, groups, stacks and group dashboards; <b>creating default content</b> for users, groups and group dashboards
Developer's Guide	<b>Creating Widget applications and integrating existing applications into OWF</b> ; widget upgrade instructions; walkthroughs for creating widgets; adding the following components to widgets: intents, descriptor URLs, preference API; logging and launching API
Configuration Guide	Overview of <b>basic architecture and security</b> ; OWF <b>installation</b> instructions; instructions for modifying default settings; <b>database</b> set up and logging guidance; <b>framework and theme</b> customization instructions; OWF <b>upgrade instructions</b> ; directions for adding and deleting <b>help</b> content
Quick Start Guide	Walkthrough of <b>basic OWF functions</b> such as using widgets, dashboards and stacks; instructions for <b>setting up a local instance of OWF</b> , unpacking the OWF Bundle and installing <b>security certificates</b> ; Truststore/Keystore changes

## 2 OWF Overview

### 2.1 Purpose

OWF is a set of tools, generally delivered in **OWF-bundle-7-GA.zip**. When deployed, OWF is used for organizing and displaying Web applications (widgets) in a browser window.

### 2.2 Basic Architecture

OWF consists of a number of components that are designed to be independently deployed. The simplest deployment scenario places them all on the same physical machine.

### 2.3 Dependencies

The OWF Bundle is shipped with Tomcat 7.0.21 which requires JDK 1.6 or higher. If running OWF with a Web server other than Tomcat, see that Web server's documentation for requirements.

### 2.4 Components

#### 2.4.1 Ozone Widget Framework (OWF) Web Application

**owf.war** – This file contains the components which make up OWF. Whether a user logs in and accesses the framework, or an administrator logs in to modify preferences, the **owf.war** is the application that launches those pages to the browser.

#### 2.4.2 CAS Web Application

**cas.war** – This optional file is responsible for providing the Central Authentication Service (CAS). OWF ships with a customized version of CAS.

*Note: Jasig CAS is an independent project and isn't directly related to OWF outside of security protocols. It is included as a convenience.*

### 2.4.3 Pluggable Security

OWF allows an administrator to customize the type of security that will be implemented for user authentication and authorization. Included within OWF's `/owf-security` directory are **XML** files that provide examples of optional security configurations. **They are intended as examples and should in no way be used in a production environment.** However, they can be used as the basis for updating `\owf-security\ozone-security-beans\OWFCasBeans.xml` and `\owf-security\ozone-security-beans\OWFLogInOutBeans.xml` (home of common configuration information and bean definitions that are used by multiple plugins) to function in a production environment.

Along with the security-related **XML** files, there is also a **ZIP** file which contains the source and configuration files for the pluggable security modules. Additionally, an Apache **ANT** build script is included. The build script allows for a rebuild of the OWF security **JAR** file for customization. Also, `owf-security\owf-security-project\src\main\resources\conf\sample-log4j.xml` contains a subset of the `OWF-log4j.xml` file (found in the `apache-tomcat-7.0.21\webapps\owf\WEB-INF\classes` directory) that pertains to security settings. It demonstrates how to enable logging for OWF Security.

*Note: In all of the pluggable security instances, user authorization can be configured to the default of an externalized text file.*

*Note: Refer to section [6:OWF Security](#) for more details about OWF Security.*

#### 2.4.3.1 Default Authentication

**OWFsecurityContext.xml** - This contains the default security implementation for OWF. It uses a PKI certificate for authentication. If no authentication is provided, it redirects the user to sign in using CAS as a fallback.

#### 2.4.3.2 X509-Only Security

**OWFsecurityContext\_cert\_only.xml** - This contains the X509-only security implementation for OWF. It uses a PKI certificate for authentication. If no authentication is provided, the user is denied access to the system.

#### 2.4.3.3 CAS-Only Security

**OWFsecurityContext\_CAS\_only.xml** - This contains the CAS-only security implementation for OWF. If the sign-in is invalid, the user will be denied access to the system.

### 2.4.3.4 X509/LDAP

**OWFsecurityContext\_cert\_ldap.xml** - This contains an X509/LDAP security implementation that uses X509 for authentication and then performs an LDAP-based lookup to determine the user's authorization.

### 2.4.3.5 Basic Spring Login

**OWFsecurityContext\_BasicSpringLogin.xml** - This contains a basic Spring security sign-in implementation that uses names populated in the **XML** file to determine the user's access.

### 2.4.3.6 OWF Security Project

**owf-security-project.zip** - This bundle contains the source code, configuration files and library files needed to build the security files which are used by OWF. Additionally, an Apache **ANT** build script is included for the building of the **JAR** file which is used by the following security **XML** files.

The **owf-security-project.zip** contains the following supporting resource files:

- **src/main/resources/conf/apache-ds-server.xml**, a sample **XML** file used by Apache Directory Server (ApacheDS, an open-source LDAP v3 compliant embeddable directory server) that sets up the initial directory service partitions for the test data.
- **src/main/resources/conf/testUsers.ldif**, an LDAP Data Interchange Format test file that can be imported to set up test entries that match the certificates bundled with OWF.
- **lib/spring-security-ldap-3.0.2.RELEASE.jar**, a file which provides LDAP functionality used by the Ozone-LDAP-Security plugin.

*Note: While the same PKI files used in sections [2.4.3.1: Default Authentication](#) and [2.4.3.2: X509-Only Security](#) are used for the authentication of users, the LDAP files in section [2.4.3.4](#)(above) are used for their authorization.*

## 2.4.4 Sample Widgets

OWF provides sample widgets in the **owf-sample-widgets.zip** file and the **owf\examples** directory located inside the unpacked **owf.war**.

The samples employ various Web technologies. They can be used as a starting point for investigating different widget implementation strategies. The follow table references a few specific examples that demonstrate how to invoke or integrate JavaScript with different technologies. Additional example widgets are included in the **examples**

directory in **owf.war**. Also, the OWF Developer's Guide includes specific examples and walkthroughs regarding the widget APIs.

**Table 2: Example Widgets**

Widget	Web Technology	Description	Widget Location
DotNet	NET	A Web page for adding eventing channels and a Web service for storing received messages.	<b>owf-sample-widget.zip</b>
Flex Pan	Flex	Displays a large image of the Earth and allows users to zoom and scroll around the image.	<b>owf-sample-widget.zip</b>
Flex Direct	Flex	Connects to the Flex Pan widget via the eventing mechanism to control the panning and zooming; also displays the current mouse position.	<b>owf-sample-widget.zip</b>
Channel Shouter Flex	Flex	Demonstrates eventing and widget launcher APIs created in Flex.	<b>owf-sample-widget.zip</b>
Channel Listener Flex	Flex	Demonstrates eventing and widget launcher APIs created in Flex.	<b>owf-sample-widget.zip</b>
OWF Silverlight Demo	Silverlight	Allows a user to send messages to other widgets in the framework, register channels to listen on, and track the frequency of the messages within the registered channels on either a pie chart or a bar chart.	<b>owf-sample-widget.zip</b>
My Chess Viewer	Java Applet	Reads and animates a chess <b>PGN</b> file, incorporates it into the framework, broadcasts each forward move selected on a channel named "mychess", and stores the current position in the game to the Preference Service.	<b>owf-sample-widget.zip</b>
Announcing Clock	HTML	A clock that broadcasts to an HTML page; optionally displays military time.	<b>owf-sample-widget.zip</b>

Widget	Web Technology	Description	Widget Location
Stockwatcher	GWT	Broadcasts a message on the "stockwatcher" channel when stocks are added or removed; saves stock symbol picks to the Preference Service.	<b>owf-sample-widget.zip</b>
NYSE Widget	GSP	Part of the widget intents example, this widget sends "view" and "graph" intents to receiving widgets.	<b>owf.war</b>
Stock Chart	GSP	Part of the widget intents example, this widget receives data from graph intents.	<b>owf.war</b>
HTML Viewer	GSP	Part of the widget intents example, this widget receives data from view intents.	<b>owf.war</b>

## 3 Installation

### 3.1 Dependencies

Listed below are the dependencies for OWF:

- Java 1.6 or higher.
- A Relational Database Management System (RDBMS). OWF currently ships with an in-memory HyperSQL (HSQLDB) database for testing and development purposes, but it is expected that a live deployment will use a more robust RDBMS such as Oracle or MySQL.

### 3.2 Supported Browsers

OWF supports Internet Explorer 7 and higher and Firefox 3.6 and higher. OWF is tested against the following browsers:

**Table 3: Tested Browsers**

Browsers	Versions
Internet Explorer	7 & 9
Firefox	3.6 & 15

### 3.3 OWF Bundle Description

The distribution of OWF consists of a **ZIP** file containing the necessary components to set up and run OWF in a development environment. The bundle contains the following:

- Tomcat-7.0.21 (Simple Java Web Container)
- Sample PKI Certificates for SSL (sample user certificates and server certificate)
- OWF Web application (**owf.war**)
- Central Authentication Service application (**cas.war**)
- Externalized Security Configurations found in the owf-security directory located inside **OWF-bundle-7-GA.zip**.
- Tomcat start scripts (**start.sh** or **start.bat**)
- The following developer-configurable externalized properties files:

- **OwfConfig.groovy**
- **CASSpringOverrideConfig.xml**
- **OzoneConfig.properties**

The following example shows how an administrator might copy, unzip and start OWF from the bundle deployment on **\*nix** operating systems, assuming the bundle is named **OWF-bundle-7-GA.zip**:

```
cp OWF-bundle-7-GA.zip/opt/.
cd /opt
unzip OWF-bundle-7-GA.zip
cd apache-tomcat-7.0.21
./start.sh
```

The following example shows how an administrator might copy, unzip, and start OWF from the bundle on **Windows** operating systems, assuming the bundle is named **OWF-bundle-7-GA.zip**:

- 1) Create a new directory from where OWF will be run. This can be done via the *Windows* UI or a command prompt.
- 2) Copy **OWF-bundle-7-GA.zip** to the new directory created in step 1.
- 3) Right-click on **OWF-bundle-7-GA.zip** and select **open**, **explore** or the command for the system's default zip/unzip program.
- 4) Unzip/unpack the bundle into the new directory created in step 1.
- 5) From a command-line, run **start.bat** from within the **apache-tomcat-7.0.21** directory.

The use of the bundled deployment archive provides all of the necessary mechanisms to deploy and run the Tomcat Web container on any Java 1.6+ enabled system.

## 3.4 Default Installation

Running the OWF Bundle via the included Tomcat Web server with the default values requires minimal installation. With standard configuration, OWF makes use of the default authentication module, which provides X509 authentication/authorization, with CAS as a fallback if the framework cannot authenticate the user via certificates installed in their browser.

*Note: If OWF 7 is installed as an upgrade, please see [Appendix A: Upgrading OWF](#).*

The application uses a **KeyStore** and a **Truststore** which are local to the installation. There is no need to install any certificates into the server's Java installation. The default certificates contained in the OWF Bundle only function for **localhost** communications. When accessed from a remote machine with a name that differs from **localhost**, while using the included certificates, OWF will not function correctly.



Accordingly, see [3.5.5: Server Certificate Creation and Installation](#) for information about creating additional certificates.

### 3.4.1 Installing User PKI Certificates

By default, the security infrastructure of the OWF Bundle is configured to use client certificates with CAS fallback. In order to identify themselves via certificates, clients need to install a PKI certificate into their Web browser. The client certificates that are included with the OWF bundle will be recognized immediately and can be used in the default security configuration. The certificates are located in the `\apache-tomcat-7.0.21\certs` directory of the OWF bundle.

The default client certificates can be used by importing the included `testUser1.p12` or `testAdmin1.p12` certificate into the user's browser. In Internet Explorer, client certificates can be added by selecting Tools → Internet Options → Content → Certificates → Personal, and then clicking the Import button. The certificate `testUser1` grants rights to use the application, while `testAdmin1` is a certificate for a user granted both user rights and administrator rights. The private key password for both certificates is `password`.

In Firefox this menu is accessed via Tools → Options → Advanced → Encryption → View Certificates → Your Certificates → Import.

*Note: Depending on the browser, importing certificates may cause warning messages to be displayed before accessing OWF. Web browsers will allow exceptions to be added to permit usage of these certificates the first time they are accessed.*

## 3.5 Custom Installation

OWF can be customized to run in a variety of environments. The following sections detail how to change default database settings and set up security.

*Note: If OWF 7 is being installed as an upgrade, please see Appendix [A.2: Prior to OWF 6](#).*

### 3.5.1 Database Setup

While the full extent of administering databases is outside the scope of this guide, this section provides information on how to work with databases for OWF.

`OwfConfig.groovy` is an OWF configuration file that allows an administrator to modify database connectivity information. It is located in the `\apache-tomcat-7.0.21\lib` directory. Once changes are made, restart the system to apply them. Developers comfortable with the Groovy language and the Grails Web application framework should be comfortable writing additional code for the file.

Listed below are the variable database elements that need to be modified to customize the OWF preferences database. A detailed explanation of each field follows in [Table 4: OWF Externalized Database Properties](#):

```
dataSource {
    pooled = true
    dbCreate = "none"
    username = "sa"
    password = ""
    driverClassName = "org.hsqldb.jdbcDriver"
    url = "jdbc:hsqldb:file:prodDb;shutdown=true"
    pooled = true
    properties {
        minEvictableIdleTimeMillis = 180000
        timeBetweenEvictionRunsMillis = 180000
        numTestsPerEvictionRun = 3
        testOnBorrow = true
        testWhileIdle = true
        testOnReturn = true
        validationQuery = "SELECT 1 FROM INFORMATION_SCHEMA.SYSTEM_USERS"
    }
}
```

**Table 4: OWF Externalized Database Properties**

Property	Purpose	Example
dbCreate	The way the database is created/updated when the server is started <i>Note: Use the appropriate database creation script in the dbscript folder before running OWF.</i>	None
username	The Username for the database connection	admin
password	The password for the database connection	Password
driverClassName	JDBC driver	org.hsqldb.jdbcDriver
url	JDBC Connection String	jdbc:hsqldb:file:prodDb;shutdown=true
pooled	Enable database connection pooling when true	True
minEvictableIdleTimeMillis	Minimum amount of time in milliseconds an object can be idle in the pool before	18000

Property	Purpose	Example
	becoming eligible for eviction	
timeBetweenEvictionRunsMillis	Time in milliseconds to sleep between runs of the idle object evictor thread	18000
numTestsPerEvictionRun	Number of objects to be examined on each run of the idle evictor thread	3
testOnBorrow	When true, objects are validated before borrowed from the pool	true
testWhileIdle	When true, objects are validated by the idle object evictor thread	true
testOnReturn	When true, objects are validated before returned to the pool	true
validationQuery	Validation query, used to test connections before use <i>Note: Syntax varies by database, see the examples included in this document.</i>	SELECT 1 FROM INFORMATION_SCHEMA.SYSTEM_USERS

*Note: When setting up databases for OWF, be mindful of the database's Lexical sorting mechanism. For some instances of OWF, with a small handful of users, this may not be much of an issue, but as the database becomes more populated, sorting may become increasingly difficult to manage.*

### 3.5.1.1 Using Oracle

- 1) Create an Oracle database user for OWF. It is recommended that there be a dedicated user for OWF to avoid database object name collisions. The OWF team recommends using UTF-8 encoding.
- 2) Due to licensing issues, OWF does not provide a JDBC driver for Oracle. Obtain the appropriate JDBC driver and place it into the Web server's classpath. For example, if running Tomcat, the driver can be placed in the `\apache-tomcat-7.0.21\lib` directory.
- 3) Open the `\apache-tomcat-7.0.21\lib\OwfConfig.groovy` file and modify the `environments` → `production` → `dataSource` section using the values that are appropriate for the OWF environment. For example:

```
dataSource {
    pooled = true
    dbCreate = "none"
    username = "owf_user"
    password = "owf_password"
    dialect = "org.hibernate.dialect.Oracle10gDialect"
    driverClassName = "oracle.jdbc.driver.OracleDriver"
    url = "jdbc:oracle:thin:@myhost.somewhere.org:1521:DEVDB1"
    properties {
        minEvictableIdleTimeMillis = 180000
        timeBetweenEvictionRunsMillis = 180000
        numTestsPerEvictionRun = 3
        testOnBorrow = true
        testWhileIdle = true
        testOnReturn = true
        validationQuery = "SELECT 1 FROM DUAL"
    }
}
```

In the example above, an Oracle database-user named **owf\_user** with a password of **owf\_password** is used for a database named DEVDB1.

There are several different types of Oracle drivers (thin, OCI, kprb) and connection options (service, SID, TNSName) available. Please consult the Oracle DBA and Oracle's JDBC documentation to create the connection most appropriate for the installed environment.

- 4) To create the schema, run the **\dbscripts\OraclePrefsInitialCreate.sql** script, prior to starting OWF.
- 5) Ensure that the transaction is committed.

*Note: If running a production environment, no additional steps are necessary. However, if sample widgets are to be installed, **OraclePrefsUpdate\_v7.0.0.sql** must be run prior to logging in. Logging in between the execution of these scripts can cause system failure.*

*Note: The OWF team is aware of a known issue with the Oracle Web-based Admin Console returning truncated characters when dealing with large data sets. Accordingly, using SQLPlus to run the script mentioned above is recommended.*

### 3.5.1.2 Using MySQL

- Create a schema within MySQL for use with OWF. It is recommended that there be a dedicated schema for OWF to avoid database object name collisions. The OWF team recommends using UTF-8 encoding.
- Create a MySQL User with full access to the OWF schema created above.

- OWF does not provide a JDBC driver for MySQL. Obtain the appropriate JDBC driver and place it into the Web server's classpath. For example, if running Tomcat, the driver can be placed in the `\apache-tomcat-7.0.21\lib` directory.
- Open the `\apache-tomcat-7.0.21\lib\OwfConfig.groovy` file and modify the **environments** → **production** → **dataSource** section using the values that are appropriate for the OWF environment.

For example:

```
dataSource {
    pooled = true
    dbCreate = "none"
    driverClassName = "com.mysql.jdbc.Driver"
    url="jdbc:mysql://myhost.somewhere.org/owf"
    username = "owf_user"
    password = "owf_password"
    dialect = "org.hibernate.dialect.MySQL5InnoDBDialect"
    properties {
        minEvictableIdleTimeMillis = 180000
        timeBetweenEvictionRunsMillis = 180000
        numTestsPerEvictionRun = 3
        testOnBorrow = true
        testWhileIdle = true
        testOnReturn = true
        validationQuery = "SELECT 1"
    }
}
```

In the example above, a MySQL database-user named **owf\_user** with a password of **owf\_password** is used, for a database named **owf**. The dialect **org.hibernate.dialect.MySQL5InnoDBDialect** will use the **InnoDB** engine which is recommended for interactive **webapps** and explicitly used as the engine on OWF create and upgrade scripts.

- Create the schema by running the `\dbscript\MySqlPrefsInitialCreate.sql` script, prior to starting OWF.

*Note: If manually creating the database objects, be sure to modify the **SQL** script (mentioned above) with the appropriate schema name. For example:*

```
use owf;
```

*Note: If running a production environment, no additional steps are necessary. However, if sample widgets are to be installed, **MySqlPrefsUpdate\_v7.0.0.sql** must be run prior to logging in. Logging in between the execution of these scripts can cause system failure.*

### 3.5.1.3 Using PostgreSQL

- 1) Create either a new login role or a new schema in order to avoid database object name collisions between OWF and other database applications.
- 2) Edit the user so that it can create database objects.
- 3) Create a new database. Use UTF-8 as encoding (default).
- 4) OWF does not provide a JDBC driver for PostgreSQL. Obtain the appropriate JDBC driver and place it into the Web server's classpath. For example, if running Tomcat, the driver can be placed in the `\apache-tomcat-7.0.21\lib` directory.
- 5) Open the `\apache-tomcat-7.0.21\lib\OwfConfig.groovy` file and modify the **environments** → **production** → **dataSource** section using the values that are appropriate for the OWF environment. For example:

```
dataSource {
    pooled = true
    dbCreate = "none"
    username = "owf_user"
    password = "owf"
    driverClassName = "org.postgresql.Driver"
    url = "jdbc:postgresql://localhost:5432/OWF"
    dialect="org.hibernate.dialect.PostgreSQLDialect"
    properties {
        minEvictableIdleTimeMillis = 180000
        timeBetweenEvictionRunsMillis = 180000
        numTestsPerEvictionRun = 3
        testOnBorrow = true
        testWhileIdle = true
        testOnReturn = true
        validationQuery = "SELECT 1"
    }
}
```

In the example above, a PostgreSQL database user named **owf\_user** with a password of **owf** is used, for a database named OWF.

- 6) Create the schema by running the `\dbscript\PostgreSQLPrefsInitialCreate.sql` script before starting OWF.
- 7) If OWF is being installed as a production environment, this can serve as the final step. However, if sample data is required (e.g., creating a testing environment), the remaining steps can be followed.

*Note: If sample data scripts ( mentioned in step 7) are to be run, script execution must take place before logging into OWF. Logging in before the execution of the script can cause system failure.*

- 8) Open the administration tool for PostgreSQL (pgAdmin III), connect to the OWF server as **owf\_user**, and select the SQL icon.

- 9) When the query window opens, select File → Open and navigate to `\dbscripts\PostgreSQLPrefsUpdate_v7.0.0.sql` in the bundle.

*Note: **ONLY** run this script against an empty database as it will delete pre-existing data.*

- 10) Execute the script.

### 3.5.1.4 Using SQL Server

- 1) Create a new SQL Server database for use with OWF.
- 2) Create a SQL Server user with full access to the OWF database created above.
- 3) OWF does not provide a JDBC driver for SQL Server. Obtain the appropriate JDBC driver and place it on the Web server's classpath. For example, if running Tomcat, the driver can be placed in the `\apache-tomcat-7.0.21\lib` directory.
- 4) Open the `\apache-tomcat-7.0.21\lib\OwfConfig.groovy` file and modify the **environments** → **production** → **dataSource** section using the values that are appropriate for the OWF environment. For example:

```
dataSource {
    pooled = true
    dbCreate = "none"
    username = "owf_user"
    password = "owf"
    driverClassName = "net.sourceforge.jtds.jdbc.Driver"
    url = "jdbc:jtds:sqlserver://localhost:1443/OWF"
    dialect="ozone.owf.hibernate.OWFSQLServerDialect"
    properties {
        minEvictableIdleTimeMillis = 180000
        timeBetweenEvictionRunsMillis = 180000
        numTestsPerEvictionRun = 3
        testOnBorrow = true
        testWhileIdle = true
        testOnReturn = true
        validationQuery = "SELECT 1"
    }
}
```

In the example above the SQL Server database user named **owf\_user** with password of **owf** is used, to access a database named OWF.

- 5) Create the schema by running the **SQLServerPrefsInitialCreate.sql** script, prior to starting OWF.

If sample data is required (e.g., creating a testing environment), the remaining steps can be followed.

*Note: If sample data scripts (as mentioned in step 5) are to be run, script execution must take place before logging into OWF. Logging in before the execution of the script can cause system failure.*

- 6) Open Microsoft SQL Server Management Studio (or another database editing tool) and select File → Open File.
- 7) Navigate to `\dbscripts\SQLServerPrefsUpdate_v7.0.0.sql` in the bundle.

*Note: This script should **ONLY** be run against an empty database as it will delete pre-existing data.*

- 8) Select the OWF database, and execute the script.

## 3.5.2 Security Setup

OWF provides a modular security approach that is based on Spring Security. All of the provided options supply both a Spring Security configuration file and Java classes that are written to Spring's security interfaces in order to perform authentication and authorization. For more details, please refer to section [6: OWF Security](#).

### 3.5.2.1 Installing the Security Module

The OWF-security files, provided in the distribution bundle, offer multiple examples of security options. These are intended as examples and should in no way be used in a production environment. The default security implementation provides an X509 certificate authentication with CAS fallback. When using the default security module in a testing environment, the user must present a valid X509 certificate, or a valid CAS login, in order to gain access to OWF. Some of the CAS fields can be customized using the `OzoneConfig.properties` (see section [6.5.4.1: Customizing CAS](#)).

For each available security option, there is a specific **XML** file which must be installed. Installing a new security module is accomplished in just a few simple steps. For more details, please refer to section [6: OWF Security](#).

## 3.5.3 Operating OWF From Different/Multiple Ports

Initial OWF configuration is set up so that Tomcat can be run from a local installation. Throughout this document, `servername:port` implies a `localhost:8080` or `localhost:8443` location. The example below shows how to set up OWF so that it can be used on `5050/5443` through the default security module.

To enable ports other than `8080/8443` while using Spring Security, the desired ports need to be explicitly edited in Web server configuration file: `conf/server.xml`.

*Note: In the event that OWF is running on a server where a port number is already in use, OWF must run from a different port number. Two applications cannot bind to the same port.*

- 1) For example, in Tomcat, change the port numbers in `conf/server.xml`, as shown below:



```
...
<Connector port="5050" protocol="HTTP/1.1"
    connectionTimeout="20000"
    redirectPort="5443" />
...
<Connector port="5443" protocol="HTTP/1.1" SSLEnabled="true"
    maxThreads="150" scheme="https" secure="true"
    keystoreFile="certs/keystore.jks" keystorePass="changeit"
    clientAuth="false" sslProtocol="TLS" />
...
```

- a) Ports 5050 and 5443 are just examples and can be changed to whatever is needed.

If OWF was running on a server where a port number was already in use, the **shutdown** port must also be changed. To do this, change the port number in the Tomcat Web server configuration file `\apache-tomcat-7.0.21\conf\server.xml` to another port, in the following example the default shutdown port was changed from 8005 to 8006:

```
<Server port="8006" shutdown="SHUTDOWN">
```

- b) Ensure that the port value used in the Web server configuration file matches the port value used in `\apache-tomcat-7.0.21\lib\OzoneConfig.properties` which is shown below, displaying the default port and host information:

```
ozone.host = localhost
ozone.port = 5443
ozone.unsecurePort = 5050
```

- 2) Save both files.
- 3) Restart the OWF server.

### 3.5.4 Adding Marketplace or Metrics Service To OWF

The flexible and scalable nature of OWF allow for applications used in concert (such as Marketplace or the Metrics Service) to be included in OWF's deployment for testing purposes. This allows a user to develop with the products working together, without having to activate multiple ports via configuration.

To include Marketplace or Metrics Service in the OWF bundle, do the following:

- 1) Unpack the zipped bundles containing the applications to be included.
- 2) Navigate to `apache-tomcat-7.0.21/webapps` in each unpacked bundle.
- 3) Copy the appropriate **WAR** files into the `apache-tomcat-7.0.21/webapps` directory where OWF was deployed.

- 4) Restart the OWF server.

*Note: If using a Marketplace release earlier than version 5, the following file must also be copied to the deployed OWF's **/apache-tomcat-7.0.21/lib** directory:*

`/apache-tomcat-7.0.21/lib/MPsecurityContext.xml`

### 3.5.5 Server Certificate Creation and Installation

Valid server certificates are needed for configuring the server to allow https authentication.

*Note: Self-signed certificates will produce warnings in a user's browser. This is because a self-signed certificate, not signed by a recognized certificate authority, has no one authorizing its validity. In a production environment, certificates should be signed by a recognized certificate authority, such as an organization's internal certificate authority.*

#### 3.5.5.1 Generating a New Self-Signed Server Certificate

A new self-signed certificate can be generated by navigating to the `\etc\tools` directory and executing `create-certificates.bat` or `.sh`, depending on the operating system in use.

Follow the on-screen prompts and create the necessary certificates for the installation. Make sure to enter the FULLY QUALIFIED server name. This needs to match the hostname of the machine exactly or the certificate will not work correctly.

If using an IP address as the Common Name (CN), an entry must be added to the Subject Alternative Name entry in the certificate. The better alternative to using an IP address is to add a name/IP pair to the hosts file and register the name as the CN.

#### 3.5.5.2 Configuring OWF For a Different Truststore/Keystore

- 1) For server-to-server calls (OWF-to-CAS communications, for example) the newly created self-signed certificate should be imported into the truststore. If the truststore is a separate file from the keystore, the certificate can be copied from the keystore to the truststore as follows:

- a. Export the certificate from the KeyStore into a file:

```
keytool -export -file servername.crt -keystore servername.jks -alias servername
```

- b. Import the file into the Truststore:

```
keytool -import -alias servername -keystore mytruststore.jks -file servername.crt
```

- 2) Modify the JVM Parameters that are used to start the Web application server in order to use the new Truststore shown above. If a Tomcat server is being used, the parameters can be found in the **setenv.bat** (or **.sh**, depending on the operating system in use) script found within the **\apache-tomcat-7.0.21\bin** folder inside of the unpacked **OWF-bundle-7-GA.zip**. If an application server other than Tomcat is being used, the parameters will need to be added to the JVM parameters which are loaded when the application server is started.

**Table 5: Custom JVM Parameters**

Parameter	Note
-Djavax.net.ssl.keyStore= "%CATALINA_HOME%\certs\keystore.jks"	Replace 'certs/keystore.jks' with the path and filename to the keystore.
-Djavax.net.ssl.trustStore= "%CATALINA_HOME%\certs\keystore.jks"	Replace 'certs/keystore.jks' with the path of the truststore (May be the same as the keystore).
-Djavax.net.ssl.keyStorePassword= changeit	Replace 'changeit' with the keystore's password (if applicable)
- Djavax.net.ssl.trustStorePassword=changeit	Replace 'changeit' with the truststore's password.

Finally, the server configuration must be modified to use the new KeyStore/Truststore in SSL. Below is the relevant section from the Tomcat configuration script found in **\apache-tomcat-7.0.21\conf\server.xml**:

```
<Connector port="8443"
protocol="HTTP/1.1"
SSLEnabled="true"
maxThreads="150"
scheme="https"
secure="true"
keystoreFile="certs/keystore.jks"
keystorePass="changeit"
truststoreFile="certs/truststore.jks"
truststorePass="changeit"
clientAuth="want"
sslProtocol="TLS" />
```

## 4 Configuration

### 4.1 Default Configuration

The OWF Bundle is configured to run by default on localhost with a predefined set of users. In addition to **users.properties**, detailed in section [4.1.1: Adding Users/Roles/Groups](#), OWF provides override files which are used to modify the default configuration.

To use an override file, place the individual file somewhere on the classpath of the server running OWF. When using the default Tomcat bundle, externalized configuration files should be placed in the folder `\apache-tomcat-7.0.21\lib`. By default, **OwfConfig.groovy** is located in `\apache-tomcat-7.0.21\lib`. The other override file, **CASSpringOverrideConfig.xml**, is located in the Ozone Bundle at `\etc\override`. If using an application server other than Tomcat, copy the override files into the directory that will include them in the classpath for that specific application server.

Optional override files are:

```
CASSpringOverrideConfig.xml
OwfConfig.groovy
```

Each of the override files is detailed in the sections that follow.

#### 4.1.1 Adding Users/Roles/Groups

The addition of users, groups, and roles into OWF depends on the choice of security implementation. The following example outlines the procedures for adding users, groups, and roles to the sample OWF X509-only, CAS-only, and X509-with-CAS security modules:

*Note: The sample security modules are included as examples and should NOT be used in a production environment. For more information, please refer to section [6: OWF Security](#).*

### 1) Edit `\apache-tomcat-7.0.21\lib\users.properties`

```
...
testUser1=password,ROLE_USER,Test User 1,[group1;I am a sample Group 1 from
users.properties;test@gmail.com;active]
testUser2=password,ROLE_USER,Test User 2
testUser3=password,ROLE_USER,Test User 3
testAdmin1=password,ROLE_ADMIN,Test Admin 1,[group1;I am a sample Group 1 from
users.properties;test@email.com;active],[group2;I am a sample Group 2 from
users.properties;test2@email.com;active],[group3;I am a sample Group 3 from
users.properties;test3@email.com;inactive]
...
```

*Note: To have actual spaces between names and numbers, escape spaces using the “\” (do not include the quotation marks) character. Moreover, when using CAS, or a custom setup which employs anything other than X509 authentication, the user names **MUST** be entered in all lower case. This is a technical issue with Spring Security, and will be remedied in a future release.*

### 2) Add users to the file in accordance with the following rules:

- a) Data Format:  
Username=password, role, display name,[group name, group description, group contact email, active/inactive status].
- b) All of the information for a single user, including group information, should be on a single line.
- c) Multiple groups may be delimited by commas.
- d) Group information is optional, and may be left out for any single user.
- e) Once a group has been created for the first time, the description, contact email, and active/inactive status will not affect those values within OWF—that information must be managed through the OWF Group Manager administrative widget.

### 3) Save the file and restart the OWF server.

Any user added to **users.properties** will be granted access to OWF upon restart.

Any user deleted from **users.properties** will be denied access to OWF upon restart.

*Note: If a custom **webserver** is being used along with the provided example security, the **users.properties** file can be copied to any directory that is on the classpath of the Web server in use. For example, if using Jetty, the file can be copied to the `\<jetty root>\resources` directory.*

To add users to any security module use X509 authentication, generated a PKI User Certificate that can be recognized by OWF.

### 4.1.2 Help Content Configuration

When a user clicks the question mark button in the toolbar, OWF offers online help:



**Figure 1: Help Button on Toolbar**

Out of the bundle, the Help window contains:

- Instructions for Configuring Help
- Keyboard Navigation Shortcuts

OWF provides various user help videos including an OWF Overview. To add these files or others into the help directory, follow these instructions:

- 1) Navigate to `\apache-tomcat-7.0.21\lib\help`
- 2) Add (or remove) files from the `\help` directory
  - a) To add the OWF help videos, open the `owf-help.zip` and copy the user help video folders into `\apache-tomcat-7.0.21\lib\help`.  
*Note: The `owf-help.zip` is available for download alongside the OWF Bundle.*
- 3) Refresh the browser. Contents in the help window should be updated.

#### 4.1.2.1 Changing the Location of Help

The help directory location is defined by the `helpPath` property in `OwfConfig.groovy`. By default help files are located on the classpath. To change the directory location, replace `classpath:help` with one of the following supported locations, then restart the server:

```
// 'file:/some/absolute/path' ('file:C:/some/absolute/path' on windows)
// 'classpath:location/under/classpath'
// 'location/within/OWF/war/file'
```

## 4.2 Custom Configuration

OWF externalized configuration files are employed in `OwfConfig.groovy`, and `CASSpringOverrideConfig.xml`. When OWF is deployed to a non-localhost environment, all externalized configuration files must be deployed and modified. In order to deploy to a non-localhost environment, changes need to be made to each file. Those changes are explained in the individual sections about each file.

Use of a production quality database (such as Oracle or MySQL), instead of the default HSQLDB, will require a change to the **OwfConfig.groovy** file, detailed in the following section.

*Note: In previous versions of OWF, the **OwfConfig.xml** file housed many of the application's customizable values. Beginning with OWF 6, these values have been moved to the **OwfConfig.groovy** file described below.*

### 4.2.1 OwfConfig.groovy File

**OwfConfig.groovy** is an OWF configuration file that allows an administrator to modify database connectivity information and other OWF variables. Once changes are made, restart the system to apply the changes. Developers comfortable with the Groovy language and the Grails application framework should be comfortable writing additional code for this file.

For full descriptions on database variables, please see [Table 4: OWF Externalized Database Properties](#). For more details on **uiperformance** plugin please see section [7.8: Enabling OWF Customization Configuration](#).

```
environments {
    production {
        dataSource {
            dbCreate = "none"
            username = "sa"
            password = ""
            driverClassName = "org.hsqldb.jdbcDriver"
            url = "jdbc:hsqldb:file:prodDb;shutdown=true"
            pooled = true
            properties {
                minEvictableIdleTimeMillis = 180000
                timeBetweenEvictionRunsMillis = 180000
                numTestsPerEvictionRun = 3
                testOnBorrow = true
                testWhileIdle = true
                testOnReturn = true
                validationQuery = "SELECT 1 FROM INFORMATION_SCHEMA.SYSTEM_USERS"
            }
        }
        //enable uiperformance plugin which bundles and compresses javascript
        uiperformance.enabled = true
    }
}

//this section may modify any existing spring beans
beans {

}

//main owf config object
```

```
owf {

    // log4j file watch interval in milliseconds
    log4jWatchTime = 180000; // 3 minutes

    enablePendingApprovalWidgetTagGroup = false

    sendWidgetLoadTimesToServer = true
    publishWidgetLoadTimes = true

    //showLastLogin = false
    lastLoginDateFormat = 'n/j/Y G:i'

    defaultTheme = "a_default"

    showAccessAlert = "true"
    accessAlertMsg = "Lorem ipsum dolor sit amet, consectetur adipiscing elit. Nulla interdum eleifend sapien dignissim malesuada. Sed imperdiet augue vitae justo feugiat eget porta est blandit. Proin ipsum ipsum, rutrum ac gravida in, ullamcorper a augue. Sed at scelerisque augue. Morbi scelerisque gravida sapien ut feugiat. Donec dictum, nisl commodo dapibus pellentesque, enim quam consectetur quam, at dictum dui augue at risus. Ut id nunc in justo molestie semper. Curabitur magna velit, varius eu porttitor et, tempor pulvinar nulla. Nam at tellus nec felis tincidunt fringilla. Nunc nisi sem, egestas ut consequat eget, luctus et nisi. Nulla et lorem odio, vitae pretium ipsum. Integer tellus libero, molestie a feugiat a, imperdiet sit amet metus. Aenean auctor fringilla eros, sit amet suscipit felis eleifend a."

    // Specifies a freeTextEntryMessage to appear on all dialogs which allow text entry
    // To turn off the warning message, use the following:
    //     freeTextEntryWarningMessage=''
    freeTextEntryWarningMessage = ''

    //use to specify a logout url
    logoutURL = "/logout"

    //sets the autoSave interval for saving dashboards in milliseconds 900000 is 15 minutes
    autoSaveInterval = 900000

    helpFileRegex = '^.*\\. (html|jsp|pdf|doc|docx|mov|mp4|swf|wmv)$'

    //This value controls whether the OWF UI uses shims on floating elements,
    // setting this to true will make
    //Applet/Flex have less zindex issues, but browser performance may suffer
    // due to the additional shim frames being created
    useShims = false

    //Locations for the optional external themes and help directories.
    //Default: 'themes', 'help', and 'js-plugins' directories on the classpath.
    //Can be configured to an arbitrary file path. The following
    //path styles are supported:
    // 'file:/some/absolute/path' ('file:C:/some/absolute/path' on Windows)
    // 'classpath:location/under/classpath'
    // 'location/within/OWF/war/file'
    external {
        themePath = 'classpath:themes'
        helpPath = 'classpath:help'
        jsPluginPath = 'classpath:js-plugins'
    }
}
```



```
}

// Optional Configuration elements for custom headers/footers.
// Example values are shown. File locations are relative or absolute paths to
// resources hosted on the owf web server. Heights are in pixel amounts.
//customHeaderFooter {
//  header = 'location/within/web/context/example.html'
//  headerHeight = 0
//  footer = 'location/within/web/context/example.html'
//  footerHeight = 0
//  jsImports = ['location/for/exampleImport1.js', 'location/for/exampleImport2.js']
//  cssImports = ['location/for/exampleImport1.css', 'location/for/exampleImport2.css']
//}

metric {
    enabled = false
    url = 'https://localhost:8443/metric/metric'

    //Optional additional properties with default values shown
    //keystorePath = System.properties['javax.net.ssl.keyStore']
    //keystorePass = System.properties['javax.net.ssl.keyStorePassword']
    //truststorePath = System.properties['javax.net.ssl.trustStore']
    //timeout = 1800000
}

}

println('OwfConfig.groovy completed successfully.')
```

The **OwfConfig.groovy** file contains customizable functionality which can be modified by an administrator. Restarting the system once the files have been modified will apply the changes.

#### 4.2.1.1 Custom log4jWatchTime

The values associated with the **log4j WatchTime** offers a time-based value as to how often the **log4j** logging system looks for updates in the **owf-override-log4j.xml** file. The 180000 value is stored in milliseconds. Accordingly, the value of 180,000 as presented below is actually a 3-minute timer.

```
log4j {
    // log4j file watch interval in milliseconds
    log4jWatchTime = 180000; // 3 minutes
}
```

*Note: When changes are made to the **log4jwatchTime** property, the server does NOT need to be restarted.*

### 4.2.1.2 Enabling Marketplace Widget Approval

OWF is automatically configured to allow users to search for and request widgets from a Marketplace server. This allows users to immediately use widgets imported from Marketplace. When a user requests a widget from Marketplace, it will appear in the user's Launch Menu.

If an administrator wants to approve widgets from Marketplace before user's can use them, they must update **OwfConfig.groovy** and add the Marketplace Approvals Widget to OWF:

- 1) Set the **enablePendingApprovalWidgetTagGroup** property in **OwfConfig.groovy** to **true**:

```
enablePendingApprovalWidgetTagGroup = true
```

- 2) Save **OwfConfig.groovy** and restart the server.
- 3) Next, add the Widget Approval descriptor file to OWF:
  - a) Sign in to OWF as an administrator;
  - b) Click the Administration button on the toolbar, then, select Widgets to open the Widgets Manager.
  - c) From the manager, click Create.
  - d) Type **../admin/descriptors/Approvals\_descriptor.html** into the Import Widget from Descriptor URL and click Load. (This file is stored in the **apache-tomcat-7.0.21\webapps\owf\admin\descriptors** directory.)
  - e) Click Apply and add the widget to users or groups.

*Note: Instructions for connecting OWF to Marketplace(s) are found in the OWF Administrator's Guide.*

### 4.2.1.3 Widget Load Times

Because the speed with which widgets launch and operate is related to an individual system's resources, OWF has implemented ways to track the time between a widget's rendering and the time it is actually ready to be used. The following values can be active at the same time:

```
sendWidgetLoadTimeToServer = true  
publishWidgetLoadTimes = true
```

**sendWidgetLoadTimeToServer** sends widget load time data to a system log file where it is written and stored.

**publishWidgetLoadTimes** will send the data to the Widget Log Widget, which can be opened from the Launch Menu, after its assigned to a user's instance of OWF.

#### 4.2.1.4 Using Shims

From the **useShims** property in **OwfConfig.groovy**, developers can configure OWF to use shims. The property is set to **false** by default. Shims can be used to improve the stability of floating element features. To use shims, set the **useShims** property to **true** as shown in the following code example:

```
//this value controls whether the OWF UI uses shims on floating elements,  
// setting this to true will make  
//Applet/Flex have less zindex issues, but browser performance may suffer  
// due to the additional shim frames being created  
useShims = true
```

#### 4.2.1.5 Custom Last Login Date

OWF stores the last sign-in dates of all users and displays it in both the User Menu and inside administration widgets. While the administration widgets show the exact date and time, the User Menu displays a rounded approximation known as a fuzzy date shown below:



**Figure 2: Sign-in Information**

The exact date will appear in a pop-up when a user hovers over the fuzzy date. This exact date format is customizable.

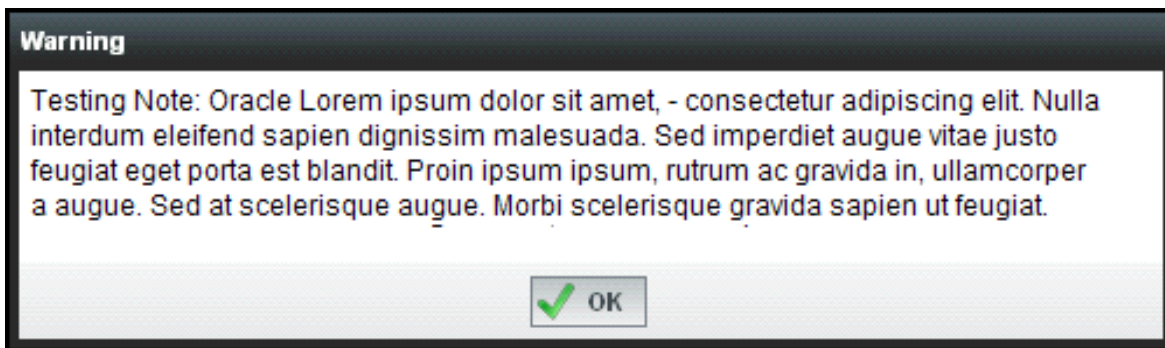
To change the default format of the sign-in date, shown in the User Menu, change the **lastLogin.DateFormat** value. For example, the default code formats the date like this: January 22, 2011, 1:39 p.m. To change this format, update the highlighted code in **OwfConfig.groovy**:

```
//showLastLogin = false  
lastLoginDateFormat = 'n/j/Y G:i'
```

There are several formatting options available. Explore them in the [Sencha/Ext JS documentation](#).

### 4.2.1.6 Custom Show Access Alert

Depending on the individual security requirements where OWF is being deployed, users may be required to agree to the specific terms of a security warning. Deploying a security warning is accomplished via a custom access alert. There are two sets of properties (and their values) which govern the access alert message, shown below:



**Figure 3: Customizable Warning Message**

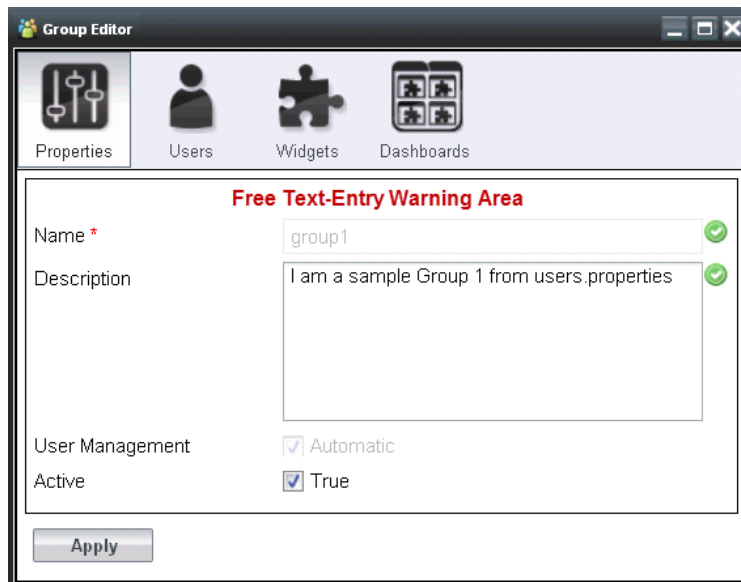
OWF ships with placeholder text, as shown in the image above, and the configurable **XML**, below.

```
showAccessAlert = "true"
accessAlertMsg = "Lorem ipsum dolor sit amet, consectetur adipiscing elit. Nulla interdum eleifend sapien dignissim malesuada. Sed imperdiet augue vitae justo feugiat eget porta est blandit. Proin ipsum ipsum, rutrum ac gravida in, ullamcorper a augue. Sed at scelerisque augue. Morbi scelerisque gravida sapien ut feugiat. Donec dictum, nisl commodo dapibus pellentesque, enim quam consectetur quam, at dictum dui augue at risus. Ut id nunc in justo molestie semper. Curabitur magna velit, varius eu porttitor et, tempor pulvinar nulla. Nam at tellus nec felis tincidunt fringilla. Nunc nisi sem, egestas ut consequat eget, luctus et nisi. Nulla et lorem odio, vitae pretium ipsum. Integer tellus libero, molestie a feugiat a, imperdiet sit amet metus. Aenean auctor fringilla eros, sit amet suscipit felis eleifend a."
```

- 1) The value for the property **showAccessAlert** must be true or false. These values are case sensitive and will only work as **true** or **false** (all lowercase) values. True will display the warning message, as created in the value tag for the property name **accessAlertMsg**. The value can be made false, which will stop the warning from triggering. This allows an administrator to keep a warning message saved, regardless of whether it is being used or not.
- 2) When the **showAccessAlert** value is set to true, upon sign in, users will be presented with the new access alert message and will not be granted access to OWF until they click the OK button.

### 4.2.1.7 Custom "Data-Entry" Message

OWF ships with the ability to add a custom text-entry message area. The message can serve as a warning for text entry, or be a message directly related to the specific instance of OWF. The message appears in red and is positioned as shown in the image below:



**Figure 4: Free Text-Entry Warning Area**

An administrator can customize the message shown above by entering text in the **freeTextEntryWarningMessage** shown below:

```
1 // Specifies a freeTextEntryMessage to appear on all dialogs which allow text entry
2 // To turn off the warning message, use the following:
3 //     freeTextEntryWarningMessage=''
4 freeTextEntryWarningMessage=''
```

Once the file is saved and the system restarted, administrators will be presented with the new custom text entry warning message when entering data into administration widgets and interfaces. To cancel the message, leave an empty string of two single quotes, as shown in line 4 above.

### 4.2.1.8 Custom Logout

OWF allows users to sign out of OWF in accordance with their instance's security plugins. Any modifications made to the URL will take effect when the system is restarted.

```
//use to specify a logout url
logoutURL = "/logout"
```

*Note: The security plugin being used must be customized so that the value entered above will work as expected.*

### 4.2.1.9 Custom “Auto Save” Interval

The OWF user interface will automatically save the user’s dashboard at a configurable time interval. The default is to save every 15 minutes. Any modifications to the default save interval will take effect when the **OwfConfig.groovy** is saved and the system is restarted.

```
//sets the autoSave interval for saving dashboards in milliseconds 900000 is 15 minutes
autoSaveInterval = 900000
```

*Note: The value for the above setting is in milliseconds. It can be changed to any millisecond value.*

*Note: The Auto Save will keep the user session alive as long as a dashboard is visible in the browser.*

### 4.2.1.10 Custom Help File Types

Only files in the **\help** directory with specific file extensions will appear in the user interface. By default, files with the following file extensions will appear: **HTM**, **HTML**, **GSP**, **JSP**, **PDF**, **DOC**, **DOCX**, **MOV**, **MP4**, and **WMV**. To modify the file types that will appear in the Help window on the OWF Toolbar, the administrator must restart the server after updating the following list of values in **OwfConfig.groovy**:

```
helpFileRegex = '^.*\\. (htm|html|gsp|jsp|pdf|doc|docx|mov|mp4|wmv)$'
```

### 4.2.1.11 Enabling Ozone Metrics Service

To enable the Metrics Service change the **metric.enabled** property to true. If the metrics service is located on a different server than OWF, enter its URL as shown in the following example:

```
metric {
    enabled = true
    url = 'https://servername:port/metric/metric'
```

*Note: Find detailed instructions regarding Metrics Service security, configuration and installation (including database information) in the Metrics Service Guide which is located in the **metric-bundle.zip**.*

#### 4.2.1.11.1 Configuring the Metrics Widget in OWF

To view metrics data using an OWF widget, make metrics data available in OWF:

- 1) Integrate the metrics server into OWF, as described in the previous section.

- 2) From the toolbar, click the OWF Administration button and select Widgets to open the Widget Manager.
- 3) Use the following information to create the View Metrics widget:

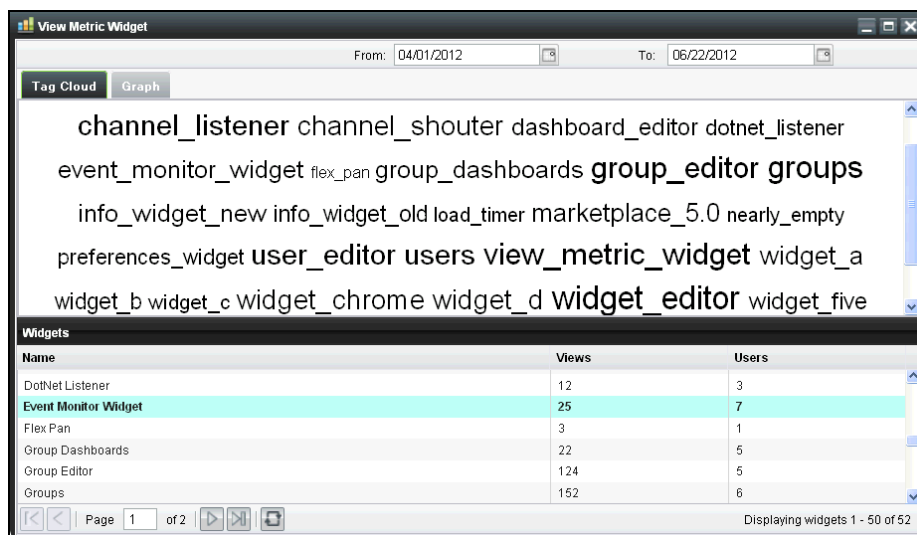
**Table 6: Data for Metrics Widget Definition**

Definition	Data Input
URL	https://widget-servername:port/metric/admin/Metrics.gsp
Large Icon	https:// widget-servername:port/metric/themes/common/images/icons/16x16_metrics.png
Small Icon	https:// widget-servername:port/metric/themes/common/images/icons/64x64_metrics.png
Width	700
Height	500
Widget Type	Metric

#### 4.2.1.11.2 Viewing the Metrics Widget in OWF

The Metrics Service can only be viewed in OWF. After following the steps in the previous section and assigning the View Metrics widget to users, the widget will appear under the Metrics button on the toolbar.

*Note: OWF users who signed in using CAS will be prompted to sign in to additional security for the Metrics Service.*

**Figure 5: Metric Widget**

The widget opens to a Tag Cloud tab that lists widget views (widgets that are viewed more will be larger in the Tag Cloud) and a grid of widget data. Clicking the name of a widget from the Tag Cloud or the grid switches to the widget's Graph tab. This displays how many times that widget was viewed. To change the monitoring dates, click the calendar icon(s) above the graph. Use the arrows or click directly on the month and year to select different date durations. Clicking the month and year (identified in the image below) opens a drop-down date selector. After clicking OK, click the highlighted date on the calendar to complete the change.

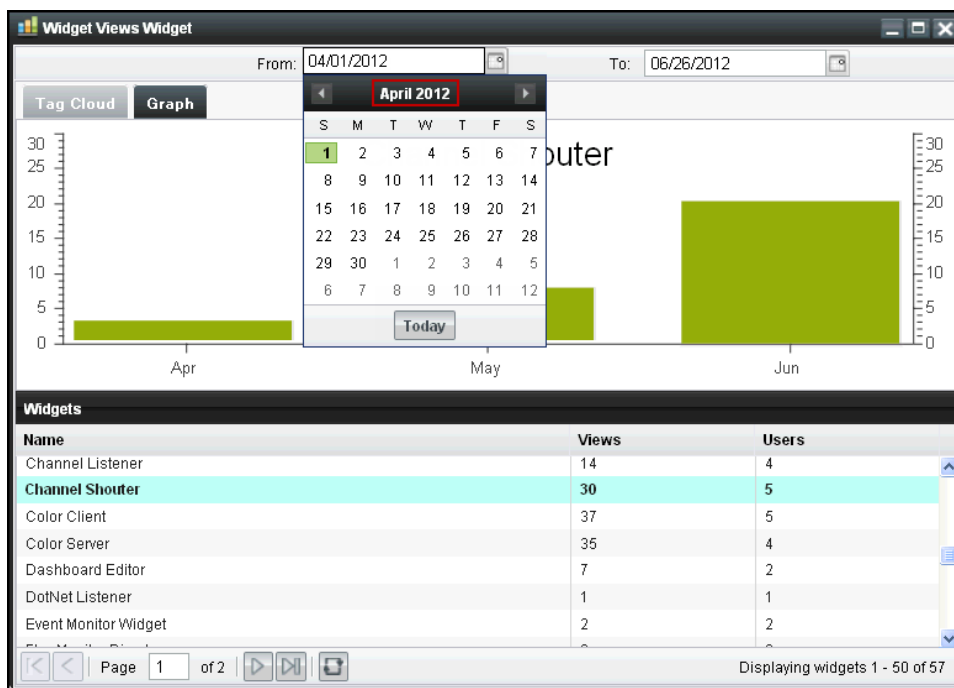


Figure 6: Graph Tab Displaying Date Switcher

## 4.2.2 Custom Logging Functions

General logging can be enabled by editing the `owf-override-log4j.xml` file which can be found in the `apache-tomcat-7.0.21\lib` directory:

```
<logger name="AuditOWFWebRequestsLogger" additivity="false">
  <level value="error" />
  <appender-ref ref="ozone-async" />
</logger>

<!-- For security logging, set this log level to "info". -->
<logger name="ozone.securitysample.authentication.audit.SecurityAuditLogger" additivity="false">
  <level value="info" />
  <appender-ref ref="ozone-async-audit" />
</logger>

<!--Add this to enable general OWF Debug logging -->
<logger name="grails.app" additivity="false">
```



```
<level value="trace" />
<appender-ref ref="ozone-async" />
</logger>
```

*Note: The **owf-override-log4j.xml** file shown above does not ship with the code shown at the bottom of the sample. However, it can be pasted into the file at an administrator's discretion in order to enable the logging of general OWF server debug messages.*

To confirm that the log files are being written, examine the **apache-tomcat-7.0.21\logs** directory. Developers familiar with **Log4j** configurations should be comfortable with this file.

*Note: Useful configurations/common requests are called out in comments in the file. For example, audit logging describing each user's Web calls can be enabled by setting **AuditOWFWebRequesterLogger** and **ozone.filter** to logging level **info**.*

Different third party libraries within OWF have also been called out so that administrators can easily modify logging levels.

## 4.2.3 Audit Logging

OWF includes an option to audit all user entry and exit in the system. The OWF Bundle ships with this feature enabled by default. The Audit Log tracks the following types of changes:

- Both successful and unsuccessful sign-in attempts
- User Sign-out Events:
  - A user signing out on purpose
  - A session times out

*Note: References to the CAS and OWF must match the settings of the current installation.*

### 4.2.3.1 Configuring Audit Log Levels

OWF logging levels can be set by editing the **/apache-tomcat-7.0.21/lib/owf-override-log4j.xml** file, which ships with the OWF Bundle. To change the audit log level, open the file and search for the following section:

```
<!-- For security Audit logging, set this log level to "info". -->
<logger name="ozone.securitysample.authentication.audit.SecurityAuditLogger" additivity="false">
  <level value="info" />
  <appender-ref ref="ozone-async-audit" />
</logger>
```

The log statement shown above, **ozone.securitysample.authentication.audit.SecurityAuditLogger**, captures sign-in and sign-out events. In debug mode, the logger will record

authentication credentials, such as: SubjectDN, IssuerDN and Validity dates for X.509 Certificate logins, as well as CAS credentials for CAS sign-in. When deploying a custom security plugin, use the logger shown above to capture all sign-in events for the system. This logger supports “info”, “debug” and “off” levels, as described in the section below.

When distributed, the default log level is set to “info.” Audit logging supports the following three log levels:

- 1) **Info** - The minimal amount of information concerning a database change is logged and consists of the following fields within the log statement:
  - a. **Log level** - This will set to “INFO” or “DEBUG” while logging is turned on.
  - b. **Log date/time** - The date and time that an event occurred. The time pattern can be changed by editing the **layout** tag of the **ozone-audit-log appender**.
  - c. **Remote IP** - The IP address of the remote client that triggered the log event.
  - d. **Session ID** - The http request session ID of the log event.
  - e. **User** - The user name of the authenticated user that caused the log event.
  - f. **Event Type** - USER LOGIN or USER LOGOUT.
  - g. **Event Message** - A description of the event.
- 2) **Debug** - This level provides all of the same information as the INFO level, but provides more detail in the event message.
- 3) **Off** - No login events will be logged.

When the audit log levels are modified, it is not necessary to restart or “bounce” OWF, as the server has a log-change listener which periodically (every 3 minutes, by default) checks for log file changes and reloads the changes should a modification to the log level take place.

#### 4.2.3.2 Sign-in Events

When using the sample pluggable security modules included in the OWF Bundle, successful sign-in authentication is captured by `ozone.securitysample.authentication.listener.AuthenticationSuccessListener` and `ozone.securitysample.authentication.listener.AuthenticationFailureListener` captures sign-in authentication which fails.

A sign-in failure will occur and be recorded in the log if a user has a valid PKI Certificate but the associated username is not registered as a valid user within OWF. A failed sign in produces the following log statement at the info level:

```
INFO [02/15/2011 15:24:04 -0500] IP: 127.0.0.1 User: testAdmin1 [USER LOGIN]: LOGIN FAILURE - ACCESS DENIED with FAILURE MSG [Login for 'testAdmin1' attempted with authenticated credentials [CERTIFICATE LOGIN]; However, the Provider was not found. Access is DENIED.]
```

A failed sign in produces the following log statement at the debug level:

```
DEBUG [02/15/2011 15:27:18 -0500] IP: 127.0.0.1 User: testAdmin1 [USER LOGIN]: LOGIN FAILURE - ACCESS DENIED with FAILURE MSG [Login for 'testAdmin1' attempted with authenticated credentials [CERTIFICATE LOGIN >> Signature Algorithm: [SHA1withRSA, OID = 1.2.840.113549.1.1.5]; Subject: [EMAILADDRESS=testAdmin1@nowhere.com, CN=testAdmin1, OU=Ozone, O=Ozone, L=Columbia, ST=Maryland, C=US]; Validity: [From: Thu Feb 04 13:58:52 EST 2010, To: Sun Feb 03 13:58:52 EST 2013]; Issuer: [EMAILADDRESS=ozone@nowhere.com, CN=localhost, OU=Ozone, O=Ozone, L=Columbia, ST=Maryland, C=US]; ]; However, the Provider was not found. Access is DENIED. Login Exception Message: [No AuthenticationProvider found for org.springframework.security.web.authentication.preauth.PreAuthenticatedAuthenticationToken]]
```

A successful PKI Certificate sign in produces the following log statement at the info level:

```
INFO [02/15/2011 15:39:13 -0500] IP: 127.0.0.1 User: testAdmin1 [USER LOGIN]: LOGIN SUCCESS - ACCESS GRANTED USER [testAdmin1], with DISPLAY NAME [Test Admin 1], with AUTHORITIES [ROLE_ADMIN,ROLE_USER], with ORGANIZATION [Test Admin Organization], with EMAIL [testAdmin1@nowhere.com]with CREDENTIALS [CERTIFICATE LOGIN]
```

A successful PKI Certificate sign-in statement produces the following log statement at the debug level:

```
DEBUG [02/15/2011 15:42:10 -0500] IP: 127.0.0.1 User: testAdmin1 [USER LOGIN]: LOGIN SUCCESS - ACCESS GRANTED USER [testAdmin1], with DISPLAY NAME [Test Admin 1], with AUTHORITIES [ROLE_ADMIN,ROLE_USER], with ORGANIZATION [Test Admin Organization], with EMAIL [testAdmin1@nowhere.com] with CREDENTIALS [CERTIFICATE LOGIN >> Signature Algorithm: [SHA1withRSA, OID = 1.2.840.113549.1.1.5]; Subject: [EMAILADDRESS=testAdmin1@nowhere.com, CN=testAdmin1, OU=Ozone, O=Ozone, L=Columbia, ST=Maryland, C=US]; Validity: [From: Thu Feb 04 13:58:52 EST 2010, To: Sun Feb 03 13:58:52 EST 2013]; Issuer: [EMAILADDRESS=ozone@nowhere.com, CN=localhost, OU=Ozone, O=Ozone, L=Columbia, ST=Maryland, C=US]; ]
```

### 4.2.3.3 Logout Events

Sign-out events are logged by the **ozone.securitysample.authentication.audit.SecurityAuditLogger** logger as mentioned in section [4.2.3.1: Configuring Audit Log Levels](#). This logger supports two levels of logging: info and debug, with the latter providing more detailed information about each sign-out event.

Below is a typical user-initiated sign-out event which has been saved as a log entry, with the log level set to info:

```
INFO [02/03/2011 16:13:35 -0500] IP: 127.0.0.1 SessionID: 8ki2ttimdc User: testAdmin1 [USER LOGOUT]:
```

Below is a typical user-initiated sign-out event which has been saved as a log entry, with the log level set to debug:

```
DEBUG [02/03/2011 15:59:53 -0500] IP: 127.0.0.1 SessionID: 1tjefhsxz1x6t User: testUser1 [USER SESSION TIMEOUT] with ID [2], with EMAIL [testUser1@nowhere.com], with ACCOUNT CREATED DATE [02/03/2011 15:58:50 -0500], with LAST LOGIN DATE [02/03/2011 15:58:50 -0500]
```

A user can also be forced to sign-out when their session times out. Below are info and debug log statements:

```
INFO [02/07/2011 10:08:21 -0500] IP: 127.0.0.1 SessionID: 1b4nvaqnb0qx8 User: testAdmin1 [USER SESSION TIMEOUT]
```

```
DEBUG [02/07/2011 10:24:21 -0500] IP: 127.0.0.1 SessionID: d0pq3g4xguv3 User: testAdmin1 [USER SESSION TIMEOUT] with ID [1], with EMAIL [testAdmin1@nowhere.com], with ACCOUNT CREATED DATE [02/07/2011 10:23:18 -0500], with LAST LOGIN DATE [02/07/2011 10:23:18 -0500]
```

#### 4.2.3.4 Auditing Login Attempts From Custom Security Modules

Audit logging of custom security modules can be achieved by adding logging capabilities via security authentication event listeners in the `/owf-security/OWFsecurityContext.xml` file, as in the case of the `ozone.securitysample.authentication.listener.AuthenticationSuccessListener` and `ozone.securitysample.authentication.listener.AuthenticationFailureListener` beans (both of which implement `org.springframework.context.ApplicationListener<org.springframework.security.authentication.event.AbstractAuthenticationEvent>`) shown below:

```
<!-- REQUIRED FOR AUDIT LOGGING OF AUTHENTICATION FAILURES -->
<bean id="authenticationFailureListener" class="ozone.
securitysample.authentication.listener.AuthenticationFailureListener"/>

<!-- REQUIRED FOR AUDIT LOGGING OF AUTHENTICATION SUCCESS -->
<bean id="authenticationSuccessListener" class="ozone.
securitysample.authentication.listener.AuthenticationSuccessListener"/>
```

Once an `onApplicationEvent` event of type `InteractiveAuthenticationSuccessEvent` is fired in the Spring Security framework, the `authenticationSuccessListener` bean will be used to log the details of the successful authentication. Moreover, once an `onApplicationEvent` event of type `AbstractAuthenticationFailureEvent` is fired in the Spring Security framework, the `authenticationFailureListener` bean will be used to log the details of the failed authentication.

#### 4.2.4 Server Settings

All references to the CAS and OWF must match the settings of the current installation. Based on the settings in `OzoneConfig.properties`, the variables (e.g.

`${ozone.host}`) are filled in at runtime. Also, `OzoneConfig.properties` includes CAS configurations for OWF, Marketplace and the Metrics Service.

**Table 7: OWFCasBeans.xml Server Settings**

Property	Purpose	Example
<code>casProcessingFilterEntryPoint.loginUrl</code>	Must point to the CAS login page.	<code>https://\${ozone.host}:\${ozone.port}/\${ozone.cas.serverLoginLocation}</code> (e.g. <code>https://servername:port/cas/login</code> )
<code>serviceProperties.Service</code>	Must point to the OWF web server.	<code>https://\${ozone.host}:\${ozone.port}/\${ozone.cas.owf.jSpringCasSecurityCheckLocation}</code> (e.g. <code>https://servername:port/owf/j_spring_cas_security_check</code> )
<code>ticketValidatorFactory.casServiceUrl</code>	Must point to the CAS server.	<code>https://\${ozone.host}:\${ozone.port}/\${ozone.cas.serverName}</code> (e.g. <code>https://servername:port/cas</code> )
<code>ticketValidatorFactory.proxyCallbackUrl</code>	Must point to the OWF web server.	<code>https://\${ozone.host}:\${ozone.port}/\${ozone.cas.owf.serverSecureReceptorLocation}</code> (e.g. <code>https://servername:port/prefs/secure/receptor</code> )

**Table 8: OWFLogInOutBeans.xml Server Setting**

Property	Purpose	Example
<code>OzoneLogoutSuccessHandler/constructor-arg/index=1</code>	Must point to the CAS logout page.	<code>https://\${ozone.host}:\${ozone.port}/\${ozone.cas.serverLogoutLocation}</code> (e.g. <code>https://servername:port/cas/logout</code> )

### 4.2.5 CASSpringOverrideConfig.xml File

`CASSpringOverrideConfig.xml` is a Spring framework override file, and should be deployed to the same server as `cas.war`, if using CAS as a security mechanism. Administrators should generally be focused with variable data in the following abridged section:

```
<bean id="openIdProviderController" class="org.jasig.cas.web.OpenIdProviderController" >
<property name="loginUrl" value="https://${ozone.host}:${ozone.port}/${ozone.cas.serverLoginLocation}" />
</bean>

...
<bean class="ozone3.cas.adaptors.UserPropertiesFileAuthenticationHandler">
<property name="propertyFileName" value="/users.properties" />
</bean>
```

If using CAS, the server needs to be configured to point to the CAS login screen. The following value would need to change in order to point CAS to the server login:

**https://\${ozone.host}:\${ozone.port}/cas/login**

If using **CASSpringOverrideConfig.xml** from a server without connectivity to the outside Internet, copy the **CASSpringOverrideConfig.xml** to the **\apache-tomcat-7.0.21-6.1.11\lib** folder. From there, the file will use classpath references to override the online Springframework URLs that the header points to during start up.

## 4.2.6 JVM Memory Settings

Adjusting a server's memory settings can increase performance or resolve permgen OutOfMemory errors. To adjust memory settings:

- 1) In the Tomcat start script (**apache-tomcat-7.0.21\lib\start.sh** or **start.bat**), set the initial **permgen** size to at least 256 MB. This can be accomplished by adding **-XX:PermSize=256m** to the Java options. If more server memory is available, increasing this **permgen** size may increase performance.
- 2) Set the maximum **permgen** size to at least 384 MB. This can be accomplished by adding **-XX:MaxPermSize=384m** to the Java options. If you have more memory available on your server increasing this **permgen** size may increase performance.
- 3) If you have a server JVM, point to it when starting Java to increase performance. To do this, navigate to **serverjvm.dll** or add server flag **-server** to the deployment command line.

## 5 Custom Banners

Developers can use **OwfConfig.groovy** to add custom headers and footers to the OWF interface. Headers display at the top of the page. Footers display directly above the absolute bottom of the page.

### 5.1 Configuring Custom Banners

To configure the feature set the **owf.customHeaderFooter** elements of the **OwfConfig.groovy** configuration file as shown below:

```
owf {  
    // Optional Configuration elements for custom headers/footers  
    customHeaderFooter {  
        header = 'location/within/web/server/root/example.html'  
        headerHeight = 0  
        footer = 'location/within/web/server/root/example.html'  
        footerHeight = 0  
        jsImports = ['location/within/web/server/root/exampleImport1.js',  
                     ' location/within/web/server/root/exampleImport2.js']  
        cssImports = [' location/within/web/server/root/exampleImport1.css',  
                     ' location/within/web/server/root/exampleImport2.css']  
    }  
}
```

### 5.2 Enabling Custom Banners

To enable a header or footer:

- 1) Define the **owf.customHeaderFooter.header** and **owf.customHeaderFooter.footer** properties.
- 2) Specify the location of the banner. It will be a Web resource that results in HTML when included in the primary interface. Possible choices include but are not limited to: **HTML** files, **PHP** files, REST calls, or any other link that produces HTML.
- 3) Specify the exact height in pixels: For OWF to size the header, footer, and dashboard appropriately, **owf.customHeaderFooter.headerHeight** and **owf.customHeaderFooter.footerHeight** require non-zero integer values.
- 4) If the custom header or custom footer requires supporting JavaScript or CSS resources, use the **owf.customHeaderFooter.jsImports** and **owf.customHeaderFooter.cssImports** properties to specify their location. Specify locations as a list of values, where each value represents a single resource.

- 5) If the custom header or footer must be initialized by a JavaScript call upon rendering, assign the **Ozone.config.customHeaderFooter.onHeaderReady** and **Ozone.config.customHeaderFooter.onFooterReady** callback variables to appropriate functions. The functions should exist in a JavaScript resource that is imported. Assumed the functions will be global. See the example below:

```
Ozone.config.customHeaderFooter.onHeaderReady = function () {  
    alert("Sample header callback");  
}  
  
Ozone.config.customHeaderFooter.onFooterReady = function () {  
    alert("Sample footer callback");  
}  
}a
```



## 6 OWF Security

OWF allows an administrator to customize the type of security that is implemented for authentication and authorization. OWF uses a pluggable Spring Security 3.0.2 solution and ships with sample security plugins that can be used as a basis for building a custom security plugin. Familiarity with [Spring Security](#) will help administrators customize OWF.

### 6.1 Basic Security Concepts and OWF

While this guide is not intended as a comprehensive guide to basic security concepts, Web security, or Spring Security, there are a few key concepts that must be understood in order to use the sample OWF security plugins and the OWF security plugin architecture.

First are the concepts of authentication and authorization, known colloquially as auth & auth. Authentication essentially means providing proof that the user is exactly who they are presenting themselves to be. Some authentication techniques include a username/password combination, an X509 certificate, a CAC card and card reader, or various biometric solutions. Authorization, on the other hand, is determining the specific access rights that an individual user should have. Consider the following:

- “Bill is allowed to log into the system – prove that you are Bill,” is a matter of authentication.
- “Bill has access to resources,” is a question of authorization.

By necessity, authentication occurs before authorization. Once authentication is satisfied, OWF moves to authorize. OWF has two authorization concepts at this time. First, OWF needs to know whether or not a user has OWF administrative access via `ROLE_ADMIN` or is only a regular user, via `ROLE_USER`. Administrative access provides a user access to the administrative widgets and the administrative console. Regular users have access only to the framework and their assigned dashboards.

Second, OWF needs to know what external OWF user groups (if any) the user has been assigned. There are two kinds of user groups; automatic user groups, which are pulled in from an external authorization source, such as LDAP or a configuration file, and manual user groups, which are set up from within OWF. If an automatic user group is new to OWF, all of the automatic user groups’ details such as description, active/inactive status, contact email address, and name come from the external source. But after the initial creation of the group in OWF, no further updates to the description, status, etc. are made.

## 6.2 Requirements for Customizing Security

The Spring Security Framework allows individual deployments to customize the OWF backend. Developers can use the OWF security plugin to integrate with any available enterprise security solutions. When customizing the security plugin, it is important to remember OWF's requirements for the plugin. Those five requirements are described in this section.

*Note: The OWF requirements are in addition to any general Web application requirements relating to Spring Security.*

1) User principal implementing the **OWFUserDetails** interface

The security plugin must create an object which represents the signed-in user and implements the **OWFUserDetails** interface. To do this, set the object as the **principal** on the **Authentication** object stored within the active **SecurityContext**.

In addition to the fields that can be set on a normal Spring **UserDetails** object, the **OWFUserDetails** interface supports access to the user's OWF groups, display name, Organization, and Email. Including values for these fields is optional.

2) OWF Groups accessible via **principal.getOwfGroups()**

OWF supports the ability to manage OWF groups via the security plugin. In order to use this feature, the **getOwfGroups()** method on the user principal must return a collection which includes an object implementing the **OwfGroup interface** for each group to which the user belongs. Any groups that OWF detects will be added to the OWF database as "Automatic" groups.

3) **ROLE\_USER** granted to all users

The user principal object's **getAuthorities()** method must return a collection that includes the **ROLE\_USER GrantedAuthority**.

4) **ROLE\_ADMIN** granted to OWF administrators

The user principal object's **getAuthorities()** method must return a collection that includes the **ROLE\_ADMIN GrantedAuthority** if the user is to have administrative access to OWF.

5) **OZONELOGIN** cookie set upon sign in and deleted on sign out

The OWF user interface performs a check for the existence of a cookie named **OZONELOGIN** during the page load. If the cookie does not exist, the interface will not load, but will instead present a message indicating that the user is not signed in. It is up to the security plugin to create this cookie when the user signs in, and to delete it when they sign out.

This mechanism prevents users from signing out, and then pressing the browser's

Back button to get back into an OWF instance that cannot communicate with the server due to failed authentication. The sample security plug-in configurations shipped with OWF contain filters that manage this process. It is recommended that custom configurations include this default implementation of the cookie behavior by using the same `ozoneCookieFilter` and `OzoneLogoutCookieHandler` beans that are included in the sample configuration, in `OWFsecurityContext.xml` and `OWFLogInOutBeans.xml`.

## 6.3 Custom Security Logout

The OWF sample security plugins can perform single sign out if the user signed in using CAS authentication. PKI authentication is handled by the browser and requires that the user close the browser to completely sign out, though their session with the application can be reset. To sign out from LDAP or a custom authentication, the system administrator must implement their own single sign out or instruct the user to close the browser after signout – see section [6: OWF Security](#) Use the following lines in the OWF Security Context file to invoke CAS's single sign out process.

```
<sec:custom-filter ref="casSingleSignOutFilter" after="LOGOUT_FILTER"/>
...
<!--OWFCasBeans.xml contains the casSingleSignOutFilter bean definition -->
<import resource="ozone-security-beans/OWFCasBeans.xml" />
```

## 6.4 Production Deployments

The samples included with OWF are not production quality samples. They are intended to provide examples on how to easily integrate various security solutions with OWF, not to provide a comprehensive security solution out of the box or a comprehensive tutorial on Spring Security. It is expected that each organization using OWF will examine its security guidelines and enterprise-wide authentication/authorization solutions and produce an OWF security plugin that is both secure and meets its standards. That solution can then be shared among OWF deployments within the organization.

Most of the examples provided contain various obvious security hazards—for example, the CAS-only, X509-only, and CAS + X509 plugins all contain a list of usernames, roles, and user groups on the hard drive in plain text in a properties file. **The CAS-only and CAS+X509 files contain the passwords in plain text. These are undeniable security hazards.** Keep this in mind when using the samples.

## 6.5 Sample Plugin Summary

OWF ships with four simple sample security plugins:

### 6.5.1 Default Authentication: CAS + X509

**OWFsecurityContext.xml** – This contains the default security implementation for OWF. It uses a PKI Certificate for authentication. If no certificate is provided, it redirects the user to sign in using CAS as a fallback. CAS stores valid usernames and passwords in a **users.properties** file on the server. Once the user has been authenticated, the authorization information (role and OWF user groups) is provided in the same properties file, **users.properties**.

### 6.5.2 Basic Login + LDAP

**OWFsecurityContext\_basic\_ldap.xml** – Added in OWF 5, this security plugin demonstrates how to use an external LDAP database for user-authorization in conjunction with a simple username/password- request page for authentication. If the username isn't in the LDAP database, or the password is incorrect, the user will be denied access to OWF.

### 6.5.3 X509 Only Security

**OWFsecurityContext\_cert\_only.xml** – This contains the X509-only security implementation for OWF. It uses a PKI certificate for authentication. If no certificate is provided, the user is denied access to system. Authorization, the users' roles (admin and user) and OWF user groups, are stored in **users.properties**.

### 6.5.4 CAS Only Security

**OWFsecurityContext\_CAS\_only.xml** – This contains the CAS-only security implementation for OWF. It eliminates certificate-based authentication. If the sign-in is invalid, the user will be denied access to the system.

To use this authentication method, replace the active security-based **XML** files, (for example, **\apache-tomcat-7.0.21\lib\OWFsecurityContext.xml**) with the **\owf-security\OWFsecurityContext\_CAS\_only.xml** file.

The container in use may need to be adjusted to eliminate the prompt for a certificate. For example, the bundle's Tomcat instance is set up to ask for certificate authentication, but not require it. To eliminate the certificate prompt, edit the **\apache-tomcat-7.0.21\conf\server.xml** file and change the "**clientAuth**" property to **false**:

```
<Connector port="8443" protocol="HTTP/1.1" SSLEnabled="true"
    maxThreads="150" scheme="https" secure="true"
    keystoreFile="certs/keystore.jks" keystorePass="changeit"
    clientAuth="false" sslProtocol="TLS"
/>
```

CAS stores valid usernames and passwords in a **users.properties** file on the server. Once the user has been authenticated, the authorization information (Role and OWF User Groups) is provided in the same properties file, **users.properties**.

### 6.5.4.1 Customizing CAS

**OzoneConfig.properties** proxies some of the CAS properties that can be customized by specific organizations. To change where the default CAS server, CAS sign-in and CAS sign-out point, update the corresponding values in **OzoneConfig.properties**. For additional CAS instructions, see [CAS documentation](#).

### 6.5.4.2 CAS Modifications for use with Marketplace

Ozone Widget Framework (OWF) and Marketplace use some files that have the same name but different properties. **OzoneConfig.properties** is one of those files. If the local instance of OWF is deployed in the same application server as an instance of Marketplace, the server can only use one **OzoneConfig.properties** file. The file that is used must include CAS properties for both OWF and Marketplace.

To update **OzoneConfig.properties** using the OWF version of the file:

- 1) From the **apache-tomcat-7.0.21\lib** folders in Marketplace and OWF, open the **OzoneConfig.properties** file in both products.
- 2) From the Marketplace **OzoneConfig.properties** file, copy:

```
ozone.cas.marketplace.serverSecureReceptorLocation=marketplace/secure/receptor
ozone.cas.marketplace.jSpringCasSecurityCheckLocation=marketplace/j_spring_cas_security_check
```

- 3) Paste the two lines of code into the OWF **OzoneConfig.properties** file.
- 4) Copy the updated OWF **OzoneConfig.properties** file onto the classpath of the server that is hosting both applications. Then, restart the server.

### 6.5.5 X509 with LDAP

**OWFsecurityContext\_cert\_ldap.xml** – This contains an X509/LDAP security implementation that uses X509 for authentication and then performs an LDAP-based lookup to determine the user's authorization. Authorization includes the user's role (**ROLE\_ADMIN** or **ROLE\_USER**) and the user's groups.

The **owf-security** project directory contains the following supporting resource files:

- **conf/apache-ds-server.xml**, a sample XML file used by Apache Directory Server (ApacheDS, an open-source LDAP v3 compliant embeddable directory server) that sets up the initial directory service partitions with the test data.

- **conf/testUsers.ldif**, an LDAP Data Interchange Format test file that can be imported to set up test entries that match the certificates bundled with OWF. This test data includes **testUser1** and **testAdmin1**, roles **ROLE\_USER** and **ROLE\_ADMIN**, and two example groups, **group1** and **group2**. It is designed to work with the sample user PKI Certificates that ship with OWF.

### 6.5.6 Basic Spring Login

**OWFsecurityContext\_BasicSpringLogin.xml** – An example of a very simple security plugin configuration using a form-based sign-in page and inline user information.

## 6.6 Installing the Security Module

The OWF-security files offer multiple examples of security options. These are intended as examples and should in no way be used in a production environment. As mentioned previously, the default security implementation provides an X509 certificate authentication with CAS fallback. When using the default security module in a testing environment, the user must present a valid X509 certificate, or a valid CAS sign-in, in order to gain access to OWF.

For each available security option, there is a specific **XML** file which must be installed. Installing a new security module is accomplished in just a few simple steps:

*Note: The following instructions act as a summary for installing individual security modules. Depending on the module being used or tested, module-specific instructions may be needed. See `\owf-security\owf-security-project.zip\readme.txt` for the installation details specific to each module type. Additionally the summary instructions below assume that the default installation is being used with Tomcat as the app server/container.*

- 1) Stop the application server. An administrator can accomplish this by clicking the `\apache-tomcat-7.0.21\bin\shutdown.bat` or `\shutdown.sh` file, depending on the operating system in use.
- 2) Delete any security-based **XML** (**OWFsecurityContext\*.xml**) files that might currently be present in the `\apache-tomcat-7.0.21\lib` directory.
- 3) Remove CAS from the OWF instance if switching to a security plugin that does not use CAS.
- 4) Copy the appropriate **XML** file from `\owf-security` to the application server's class path. When running Tomcat, the classpath is the `\apache-tomcat-7.0.21\lib` directory.

- 5) Restart the application server by clicking either `\apache-tomcat-7.0.21\start.bat` or `\start.sh` file, depending on the operating system in use.

*Note: The following instructions describe how to remove CAS from the OWF instance. This should only be done if switching to the X509 sample, the X509+LDAP sample, or a custom plugin that does not require CAS.*

- 6) Remove `CASSpringOverridesConfig.xml` from `\apache-tomcat-7.0.21\lib` if it was deployed there.
- 7) Delete the CAS deployment: Delete `cas.war` from `\apache-tomcat-7.0.21\webapps`.

### 6.6.1 X509-Only Specific Instructions

The `OWFsecurityContext_cert_only.xml` file eliminates CAS as a fallback to authentication. If the user does not present a valid X509 certificate, they will be denied access to the system. Authorization is provided by the `users.properties` file. The format of this file is described in [4.1.1: Adding Users/Roles/Groups](#).

To use this security plugin, replace the active security-based **XML** file (e.g., `\apache-tomcat-7.0.21\lib\OWFsecurityContext.xml`) with the `OWFsecurityContext_cert_only.xml` file, which can be found in the `\owf-security` directory. Follow the directions to stop and restart OWF and follow the directions above, to remove CAS.

### 6.6.2 CAS-Only Specific Instructions

To use just the CAS server without any X509 certificate authentication, replace the provided `OWFsecurityContext.xml` file with `OWFsecurityContext_CAS_only.xml`, and follow the steps in [6.6: Installing the Security Module](#) to stop and restart the server. When using the CAS only security implementation, if the user fails authentication to the CAS, they will be denied access to the system.

When using the CAS only security implementation, the servlet in use may need to be adjusted to eliminate the prompt for a certificate. For example, the bundle's Tomcat instance is set up to ask for certificate authentication, but not require it. To eliminate the certificate prompt, edit the `\apache-tomcat-7.0.21\conf` file and change `clientAuth` property to false:

```
<Connector port="8443"
  protocol="HTTP/1.1"
  SSLEnabled="true"
  maxThreads="150"
  scheme="https"
```



```
secure="true"  
keystoreFile="certs/keystore.jks"  
keystorePass="changeit"  
clientAuth="false"  
sslProtocol="TLS" />
```

### 6.6.3 X509/LDAP

The **OWFsecurityContext\_cert\_ldap.xml** file provides X509 client authentication with an LDAP-based lookup to determine the user's authorization. The default configuration attempts to connect to a local installation of Apache Directory Server on port 10389, using the default system account. It determines the user's authorization by searching on the full distinguished name presented in the X509 certificate.

Sample configuration files are provided to set up an Apache Directory Server with user information that matches the X509 certificates provided with OWF, including a server configuration **.xml** file and an LDAP Data Interchange Format file (**\*.ldif**) which loads users to match the distinguished names in the certificates. For more information about LDAP, refer to <http://directory.apache.org/>.

Included is a sample Apache DS **server.xml** file, called **\owf-security\owf-security-project\src\main\resources\conf\apache-ds-server.xml**. It adds the partition owf-1 to Apache DS. To do so, it adds the following line of **XML** to the **XPATH spring:beans/defaultDirectoryService/partitions**:

```
<jdbmPartition id="owf-1" suffix="o=Ozone,l=Columbia,st=Maryland,c=US" />
```

It is also necessary to load the sample data into the directory service. The OWF team has provided a sample **LDIF** file, called **\owf-security\owf-security-project\src\main\resources\conf\testUsers.ldif**.

*Note: Downloading the Apache Directory Studio may be helpful.*

It is straightforward to modify how the LDAP search is conducted for both user roles and user groups. No adjustment is required in order to run the plugin with the default data. However, to modify the plugin to run off of a different data set, adjust **owf-security-beans\LdapBeans.xml**. It is recommended that the administrator get the plugin working off of the default data set before trying to migrate to a different data set by modifying the LDAP queries.

To use the X509(cert)/LDAP security implementation, replace the provided **owf-security.xml** file with **OWFsecurityContext\_cert\_ldap.xml**, and follow the directions in section [6.6: Installing the Security Module](#) to stop and restart the server and to remove CAS.



## 6.7 Custom Security and Sample Source Code

Along with the security-related **XML** files, there is also a **ZIP** file which contains the source and configuration files for the pluggable security modules. Additionally an Apache ANT build script is included. The build script allows for a quick and simple rebuild of the security project (**JAR**) files for greater customization, if needed.

There are two packages in the security project. The first package is **ozone.securitysample**. This package contains the code required for the security sample projects. This code is probably not extremely reusable, or reusable only with modifications.

The second package is called **ozone.security**. This package is very important, and is required by OWF to run.

The most important classes are defined in the following sections.

## 6.8 OWFUserDetails

### Package: **ozone.security.authentication**

This interface defines interactions for a data model that OWF requires in order to handle OWF user groups. Using an implementation of this interface (and implementations may vary) will ensure that OWF user groups work.

This interface extends the classic **UserDetails** interface as defined by Spring Security 3.0. Please refer to the [Spring Security UserDetails API](#) to read about the interface **UserDetails**. In order to understand how **UserDetails** works in the Spring Security 3 program flow, refer to the [Spring Security 3 guide](#).

```
public interface OWFUserDetails extends UserDetails{
    /**
     * getOwfGroups
     * @return a Collection containing information about the OWF Groups that this user is a part of.
     */
    public Collection<OwfGroup> getOwfGroups();
    /**
     * getDisplayName
     * @return String the Display Name of the user. This name is displayed in the upper right hand
     corner of the banner. If not set, the username is used instead. It is an optional field.
     */
    public String getDisplayName();
}
```

### 6.8.1 OWFUserDetailsImpl

<<**ozone.security.authentication**>>

This is a sample implementation of the **OWFUserDetails** interface. It is not mandatory to use this implementation, it is only a sample.

*Note: If a custom implementation is written, authorities must be write-accessible; create a `setAuthorities` method.*

## 6.8.2 OWFUserDetailsImpl

**<<ozone.security.authorization.target>>**

This interface describes a single OWF user group. A group is a way of collecting OWF users and being able to assign widgets and other behaviors to them collectively.

Consider this class to be similar to the Spring Security class **GrantedAuthorities**:

**package ozone.security.authorization.target;**

```
/**
 * WidgetGroup
 *
 *
 * This interface describes a single OWF user group. A group is a way of collecting
 * OWF users and being able to assign widgets and other behaviors to them collectively.
 *
 * A group has one attribute, a name that should not change. The other attributes are optional.
 *
 * Consider this similar to GrantedAuthorities.
 *
 */
public interface OwfGroup {
    /**
     *
     * @return the name of the Owf Group
     */
    public String getOwfGroupName();
    /**
     *
     * @return a drescription of the OWF group
     */
    public String getOwfGroupDescription();
    /**
     *
     * @return an email address that will reach someone if there are problems with the group.
     * This is displayed to a group administrator in OWF
     */
    public String getOwfGroupEmail();
    /**
     *
     * @return true if this is an active group
     */
    public boolean isActive();
}
```

### 6.8.3 OwfGroupImpl

<<**ozone.security.authorization.model**>>

This class implements an **OwfUserGroup**. It can be used as-is in a security implementation, or one can be created as-needed.

### 6.8.4 GrantedAuthorityImpl

<<**ozone.security.authorization.model**>>

This class implements the Spring Security 3.0 interface **GrantedAuthority**. It can be used as-is in a security implementation, or one can be created as-needed.

## 7 Themes

### 7.1 Overview

OWF includes four pre-made themes: a default OWF theme, two high-contrast themes and a large text theme. OWF developers can create their own themes to include in the OWF user interface. End-users can switch between themes by selecting the Settings button on the toolbar and then choosing Themes.

Since the OWF 4 redesign, one line of code can change the overall color of OWF. Font size and font family are also adjustable. However, changing the entire look and feel of OWF requires additional work.

### 7.2 Changing the default theme

The default theme is named OWF. To change the default theme, change the `defaultTheme` value in the `apache-tomcat-7.0.21/lib/OwfConfig.groovy` file.

### 7.3 Creating and modifying themes

OWF uses Compass, an open-source CSS stylesheet framework built on top of the SASS family of stylesheet languages. Two languages comprise SASS. OWF uses SCSS, the newer of the two languages. SCSS is a superset of CSS. It compiles into CSS. Compass is a framework for managing large SASS projects as well as augmenting and managing the SASS compilation process. For more information, see the [SASS and Compass guide](#).

#### 7.3.1 Prerequisites

To create and modify themes, the developer will need:

- Compass versions 0.11.3  
*Note: Previous versions of OWF allowed for the use of Compass versions 0.11.3 to 0.11.7. However, style changes require the use of Compass 0.11.3 because newer versions of Compass automatically upgrade SASS to versions that cause issues with `accessibility-bow.scss`.*
- SASS 3.1.3 (required by Compass)
- Ruby 1.9.2 (required by SASS and Compass)

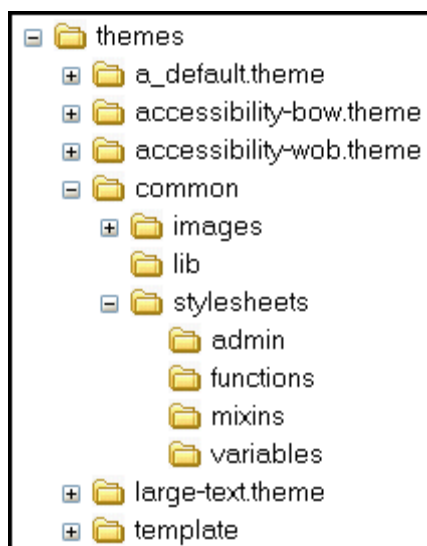
To obtain these dependencies:

- 1) Install Ruby.

- 2) Use the included “gem” tool to install SASS and Compass by running **gem install compass -v 0.11.3** as an administrator.
- 3) Confirm that SASS and Compass are on the system PATH.

### 7.3.2 Layout of themes directory

To locate the theme files unzip the **apache-tomcat-7.0.21/webapps/owf.war** and open the **themes** directory. The following figure shows the layout of the theme files.



**Figure 7: Themes Directory Structure**

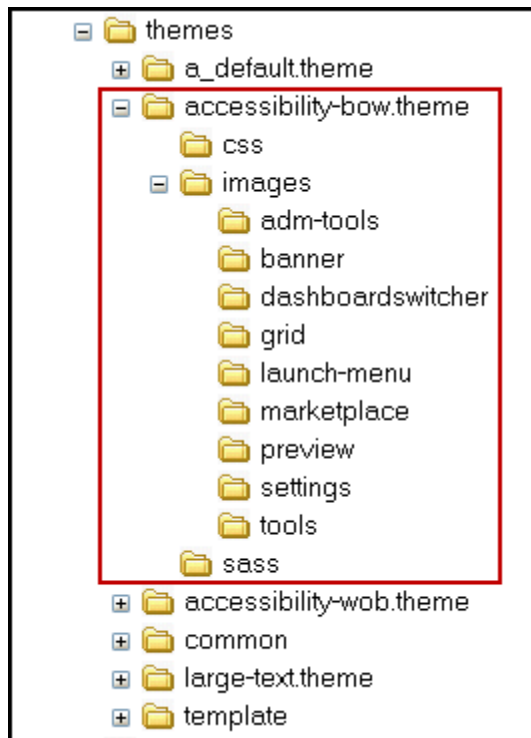
A brief description of theme folders and files that are found under **owf.war/themes**:

**Table 9: Theme File and Folder Descriptions**

File or folder name	Description
/compile_all_themes.bat or /compile_all_themes.sh	Shell scripts for Windows or UNIX that automate the process of compiling all of the themes
/watch_all_themes.bat or /watch_all_themes.sh	Shell scripts for Windows or UNIX that start watch processes on all themes, which will automatically recompile the stylesheets whenever a change is detected
/a_default.theme	Parent folder for the OWF default theme
/accessibility-bow.theme	Parent folder for the black-on-white theme
/large-text.theme	Parent folder for the large text theme
/accessibility-wob.theme	Parent folder for the white-on-black theme
/common	Parent directory for files that are likely to

File or folder name	Description
	be used by most or all themes
/common/images	Directory for images that are common to many themes or can serve as defaults
/common/lib/owf_utils.rb	Functions (written in Ruby) that are useable within the SCSS file (should not need to be modified)
/common/stylesheets/	SCSS "partials" that build OWF themes
/common/stylesheets/_owf_all.scss	Central import file that imports all other files in the directory. If creating new SCSS partials, include them in this file.
/common/stylesheets/variables/	Contains variables used within the SCSS stylesheets
/common/stylesheets/variables/_constants.scss	Variables values that should generally not change
/common/stylesheets/variables/_ext_overrides.scss <i>Note: Modifying this file may require an Ext JS developer license.</i>	Overridden default values for Ext JS's SCSS files
/common/stylesheets/variables/ *all other files	Variables that control aspects of the stylesheet generation and default values. The values of these variables may be overridden in a given theme
/template	Directory containing a theme template that contains every file listed in this table except for *.css. These files are as complete as possible without including properties that differentiates themes. To differentiate, developers must enter data.

The following table explains the files and folders that comprise a theme. The files and folders are found under a specific theme's directory like the black-on-white theme shown in [Figure 8](#).



**Figure 8: Individual Black-on-White Theme Directory Structure**

In OWF, the parent theme directories include `.theme` in their naming convention. Example: `accessibility-bow.theme`. [Table 10: Theming Conventions](#) uses an example theme named `example.theme` (this example is not included in the bundle).

**Table 10: Theming Conventions**

Convention	Description
<code>example.theme/theme.json</code>	Contains the theme metadata description that tells OWF where to find the theme's files at runtime and provides information about the description, author, and display name
<code>example.theme/css/example.css</code>	The result of compiling a SCSS file from the SASS directory is stored here, in a file with the same name but with a <code>.css</code> extension instead of <code>.scss</code>
<code>example.theme/images</code>	Location of theme-specific images. OWF searches for images here first. If they are not found, OWF searches <code>common/images</code>
<code>example.theme/images/preview/</code>	Directory for theme screenshots
<code>example.theme/sass/example.scss</code>	The main <code>.scss</code> file for a theme - overrides any desired variables from the <code>common/stylesheets/variables/example</code> files. It defines the theme background and imports the desired files from <code>common/stylesheets</code> . This file is essentially where the theme is

Convention	Description
	defined.

## 7.4 Creating a New Theme

- 1) Choose a theme name.  
The name should not have any spaces. It should be all lowercase. Words can be separated by hyphens.
- 2) Copy the **template** directory to **<theme\_name>.theme**; substitute the name created in step 1 for the theme for **<theme\_name>**.
- 3) Navigate into the **<theme\_name>.theme** directory.
- 4) Open **theme.json** in a text editor and edit the following fields:
  - The **name** attribute must use the **<theme\_name>** chosen in step 1.
  - The **display\_name** attribute should contain a user-friendly, readable name for the theme (It can include spaces and capital letters.).
  - The **CSS** attribute must include the **<theme\_name>** as show below:  
**themes/<theme\_name>.theme/css/<theme\_name>.css.**
  - All URL properties are relative to the context root. For now, ignore the **thumb** and **screenshots** fields, because images of a theme cannot exist until the theme is created.
- 5) Rename **sass/theme.scss** to **sass/<theme\_name>.scss**
- 6) Edit **sass/<theme\_name>.scss** (MANDATORY)
  - a) Set the **\$theme-name** variable to the **<theme\_name>** chosen in step 1.
  - b) Set the overall background. If the background is not set, it defaults to plain white.

The **sass/<theme\_name>.scss** file is the primary place to create a custom theme by overriding variables. The files within **themes/common/stylesheets/variables** contain lists of variables that are available for overriding. Custom values for these variables should be defined directly below the **\$theme-name** declaration (BEFORE importing **variables/\***). The lower part of this file imports all the SCSS partials that use the variable values to construct the stylesheets.

*Note: For complex customizations, import statements can be deleted if equivalent functionality is custom-implemented by the theme.*

- 7) By default, a theme will search the **common/images** directory for image files. To use custom images in the new theme, override those images by placing new



images in the `<theme_name>.theme/images` directory. Those new images will only apply to `<theme_name>`. New images must have identical pathnames and file names as the images being overridden relative to the `images` directory.

8) Compile your theme. This can be done in several ways.

- To do a one-time compile of only this theme, navigate to the `sass` directory and run `compass compile` in a terminal. You may pass in the `--force` option to force a recompile even when source files do not appear to be changed.
- To start a process that will continue to watch your SCSS for changes and recompile as needed, navigate to the `sass` directory and run `'compass watch'` in a terminal.
- To do a one-time compile of ALL themes, navigate to the `themes` directory and run the appropriate script.
  - a) On Windows, this is done by running `compile_all_themes.bat`
  - b) On UNIX, this is done by running `sh compile_all_themes.sh`  
*Note: The scripts assume that their current directory is the themes directory.*
- To start watches on ALL themes, navigate to the themes directory and run the appropriate script. These scripts assume that the current directory is the `themes` directory.
  - a) On Windows, run `watch_all_themes.bat`. This will open a new, minimized command prompt for each theme, in which `compass watch` will be running.
  - b) On UNIX, run `sh watch_all_themes.sh` in a terminal. This will start `compass watch` as a background process for each theme. The script will not exit until the watches exit, and so is generally terminated with a SIGINT.

9) Once the theme successfully compiles, verify that `<theme_name.css>` has been created in the `css` directory, and that it does not contain any error messages (These messages replace the entire normal output, so if errors exist they will be obvious).

10) Deploy OWF with the newly created theme. Do this one of two ways:

- For a development instance, run `grails -Duser=testAdmin1 run-app -https` from the top directory of the source tree.
- Build OWF and start the Tomcat server, as described in [3.3: OWF Bundle Description](#). To build OWF, run `ant` from the top directory of the source tree. To start the build server, run `start.bat` or `start.sh` located in

**/apache-tomcat-7.0.21.**

*Note: Before running **ant**, the developer may need to run **ant init-build**.*

11) Log into OWF as a user or admin, and open the theme selector window which is located under the settings button on the toolbar.

12) Select and apply the new theme in the theme selector.

*Note: Currently, there are no screenshots for the newly created theme.*

13) Once the new theme is running, take some screenshots of it. Screenshots should be saved in the **<theme\_name>.theme /images/preview** directory.

14) Edit **<theme\_name>.json**. Set the **thumb** attribute to one of the theme screenshots of the entire browser viewing area. Next, add screenshot items to the **screenshots** array. These items are **JSON** objects that contain the attributes **url** and **description**. For an example of screenshot objects, see the **theme.json** files of other themes or the comment section at the bottom of the template **theme.json**.

15) In the OWF user interface, open the theme selector again and verify that the screenshots display.

## 7.5 Making Themes Usable Outside of owf.war

Once the creation of a custom theme is complete, (see [7.4: Creating a New Theme](#)) it can be housed outside of the **owf.war** in a customizable location on the classpath. The following section, added to the **apache-tomcat-7.0.21\lib\OwfConfig.groovy** file, allows an administrator to define where themes, help files, and js-plugins will reside.

```
owf {
    //Locations for the optional external themes and help directories.
    //Default: 'themes', 'help', and 'js-plugins' directories on the classpath.
    //Can be configured to an arbitrary file path. The following path styles are supported:
    // 'file:/some/absolute/path' ('file:C:/some/absolute/path' on Windows)
    // 'classpath:location/under/classpath'
    // 'location/within/OWF/war/file'
    external{
        themePath = 'classpath:themes'
        helpPath = 'classpath:help'
        jsPluginPath = 'classpath:js-plugins'
```

In order to make the themes usable from OWF, one of two scenarios will need to be implemented. Either the **\etc\tools\create-web-bundles.bat**(or **.sh**) command will need to be run in order to create gzipped **CSS** files, or uiperformance will need to be disabled.

When running the script, note that it takes the following arguments on the command line, the first of which is required:

- **-js externalJsLocation** (required)  
The location of the external js plugin folder.
- **-o owfLocation**  
The location of either the OWF **WAR** file or a directory where the **WAR** was extracted. Giving it the **WAR** file extracts it to a temp directory. It is then recreated where it was originally located after the rebundling is complete.
- **-e externalThemesLocation** (Optional)  
The location of the external themes folder. If it is unspecified, external themes are not bundled.

Once the **create-web-bundles.bat** (or **.sh**) has been executed, the included themes should be available from the theme selector in OWF.

## 7.6 Non-themable OWF Components

The following components are **not** theme-able:

- Sign-out page
- CAS sign-in page

## 7.7 Themable OWF Components

This section lists the various **SCSS** files that are used to construct the OWF stylesheets and the themable components that are controlled by those files. Changes to these files will affect **all** themes. All themable components are located in the **owf.war/themes/common/stylesheets** directory.

**Table 11: Themable Components**

File that must be modified	Themable Component(s)
<b>_aboutWindow.scss</b>	About Window
<b>_adminWidget.scss</b>	Admin Editors
<b>_banner.scss</b>	Toolbar User Menu
<b>_buttons.scss</b>	Buttons
<b>_dashboardSwitcher.scss</b>	Dashboard Switcher
<b>_editWidget.scss</b>	Admin Editors

File that must be modified	Themable Component(s)
<code>_grid.scss</code>	Grids
<code>_launchMenu.scss</code>	Launch Menu
<code>_main.scss</code>	Drop-down Menu Form Headers: Window, Panel and Taskbar Keyboard Focus Loadmask Message Box Progress Bar Tooltips Etc.
<code>_manageWindowContainers.scss</code>	Dashboard Editors and Managers Widget Managers
<code>_marketplaceWindow.scss</code>	Marketplace Window
<code>_portal.scss</code>	Widget Portlets
<code>_settingsWindow.scss</code>	Administration Tools Window Settings Window
<code>_systemWindow.scss</code>	About Window Administration Tools Window Dashboard Switcher Settings Window
<code>_themeSwitcher.scss</code>	Theme Switcher Window
<code>_widgetChrome.scss</code>	Widget Chrome Menu Bar Widget Chrome Buttons Widget Chrome Sample Widget
<code>_widget.scss</code>	Launch Menu Widget Icons Widget Switcher Widget Icons

*Note: \*.scss files that apply to themes will be listed in the table above, other \*.scss files that are included in the bundle but do not pertain to themes may not appear in the table.*

## 7.8 Enabling OWF Customization Configuration

In order to enable the ability to override the JavaScript in OWF, **OwfConfig.groovy** must be updated in the **apache-tomcat-7.0.21/lib** directory. Add the following property:

**uiperformance.enabled=false**. To apply the changes, restart the system.

```
environments {
    production {
        dataSource {
            dbCreate = "none"
            username = "sa"
            password = ""
            driverClassName = "org.hsqldb.jdbcDriver"
            url = "jdbc:hsqldb:file:prodDb;shutdown=true"
            pooled = true
            properties {
                minEvictableIdleTimeMillis = 180000
                timeBetweenEvictionRunsMillis = 180000
                numTestsPerEvictionRun = 3
                testOnBorrow = true
                testWhileIdle = true
                testOnReturn = true
                validationQuery = "SELECT 1 FROM INFORMATION_SCHEMA.SYSTEM_USERS"
            }
        }
        //enable uiperformance plugin which bundles and compresses javascript
        uiperformance.enabled = false
    }
}

beans {
    //This block is equivalent to using
    // an org.springframework.beans.factory.config.PropertyOverrideConfigurer
    //See Chapter 14 of the Grails documentation for more information: http://grails.org/doc/1.1/
}

println('OwfConfig.groovy completed successfully.')
```

*Note: For the current build, the modification does have a mildly negative side effect of removing the performance-enhancing OWF JavaScript file-bundling feature.*

## 8 Customizing OWF JavaScript

OWF uses JavaScript, CSS bundling, minification, compression and caching in order to optimize the downloading of resources to the browser. Nearly all JavaScript and CSS resources which get downloaded to the browser have a unique version string in their names. This allows the OWF server to tell the browser to permanently cache these name-specific resources.

Where it was previously necessary to open the **owf.war** file to edit the **JS** files in order to customize OWF across all themes, it is now possible to make many common modifications externally without extracting the **owf.war** file.

An external JavaScript plugins folder for customizations is included in the bundle at **apache-tomcat-7.0.21/lib/js-plugins**, already containing the most commonly modified OWF JavaScript files. Any code inside the **init** method of these files will be run following the initialization of their parent file of the same name inside the **owf.war** file.

The following files are included in the bundle and ready to customize. The table explains which components in OWF will change when the corresponding files are customized:

**Table 12: External JavaScript Files for Customizing OWF**

Filename	Description of Customization
<b>Banner.js</b>	OWF banner on initialization, as well as functions that listen to the banner's dock and undock events
<b>Dashboard.js</b>	All dashboard types on initialization through their parent class
<b>DashboardContainer.js</b>	The container that holds all dashboard types on initialization
<b>WidgetBase.js</b>	The widget base, which includes the header
<b>WidgetPanel.js</b>	The inner panel of widgets, below the widget header
<b>WidgetWindow.js</b>	The containing window for widgets

*Note: Though it is still possible to open the **owf.war** file, edit files, and recreate the **WAR** to customize OWF, the external method is recommended to ensure code separation as well as to make it easier to upgrade to future versions of OWF. Accordingly, only modify JavaScript inside the **owf.war** file if the desired file to customize is not in the **js-plugins** folder.*

## 8.1 Configuring the External JavaScript Files

The external JavaScript plugins folder will only be included in OWF if the steps in [8.2: Deploy or Recreate External JavaScript/CSS](#) are recompiled to include them, unless OWF is opened in debug mode. Since it requires action on the part of the implementer to utilize, there is no configuration property to quickly turn it on or off.

There is, however, a configuration parameter to set the name and location of the external folder to use in debug mode, which is located in the `OwfConfig.groovy` file located at `apache-tomcat-7.0.21/lib/`. The `owf.external.jsPluginPath` property controls where OWF looks for the external JavaScript files when in debug mode. The default setting of this property is “classpath:js-plugins,” so when OWF is rendered in debug mode, it will look in the classpath, which includes the `apache-tomcat-7.0.21/lib/` folder, for the `js-plugins` folder and include its JavaScript files in the list returned to the client. This default location is depicted in the code snippet below, along with examples of other configuration options:

```
...
owf {
    //Locations for the optional external themes and help directories.
    //Default: 'themes', 'help', and 'js-plugins' directories on the classpath.
    //Can be configured to an arbitrary file path. The following
    //path styles are supported:
    // 'file:/some/absolute/path' ('file:C:/some/absolute/path' on Windows)
    // 'classpath:location/under/classpath'
    // 'location/within/OWF/war/file'
    external{
        themePath = 'classpath:themes'
        helpPath = 'classpath:help'
        jsPluginPath = 'classpath:js-plugins'
    }
    ...
}
...
```

## 8.2 Deploy or Recreate External JavaScript/CSS

In order to deploy any changes made to external files inside the `js-plugins` folder to the OWF server, the minified JavaScript files must be recompiled to include the external files. The instructions for including the external JavaScript files are as follows:

- 1) From the command line, change the working directory to the `WEB-INF/tools`.
- 2) Execute the `create-web-bundles` script to include the external files in the minified JavaScript files inside the `owf.war` file.
  - a. On a Windows system, use the following command:

```
create-web-bundles.bat -o ../../apache-tomcat-7.0.21/webapps/owf.war -js ../../apache-tomcat-7.0.21/lib/js-plugins
```

b. On a Unix system, use the following command:

```
sh create-web-bundles.sh -o ../../apache-tomcat-7.0.21/webapps/owf.war -js ../../apache-tomcat-7.0.21/lib/js-plugins
```

- 3) Shut down the OWF server if it is currently running.
- 4) Navigate to the **apache-tomcat-7.0.21/webapps** folder and delete the **owf** folder if it exists.
- 5) Start OWF via **start.bat** or **start.sh**. Be sure to clear the browser's cache to ensure the most recent minified files are being received.

*Note: For testing purposes, changes made to external JavaScript files can immediately be viewed by opening OWF in debug mode, instructions for which can be found in [8.6: Debugging JavaScript/CSS Problems](#).*

## 8.3 JavaScript/CSS Bundle Naming Convention

Individual JavaScript and CSS source files are concatenated into bundle files. The bundle files are minified or compressed and versioned. The original source JavaScript and CSS files which make up these bundle files are also included in the **WAR** for reference and extension. Every JavaScript or CSS source file has a compressed and versioned file, and a **GZIP** compressed and versioned file. For example the OWF-server JavaScript bundle source file is **js/owf-server.js**. The file is a concatenation of JavaScript files used for the main OWF page and it is readable. However, there are two other versions of the file referenced above:

- Main Source: **js/owf-server.js**
- Versioned and Minified: **js/owf-server\_\_v6.0-GA-24385.js**
- Versioned and Gzip Compressed: **js/owf-server\_\_v6.0-GA-24385.gz.js**

*Note: The versioned, minified and Gzip compressed file names include a unique id number that changes with each release. In the examples above, the unique id number is 24385.*

Every JavaScript and CSS source file follows the above naming convention. If the filename uses the following naming convention, it is versioned and minified:

```
_v<version>.<ext>
```

If the filename uses the following naming convention, it is versioned and **GZIP** compressed:

```
_v<version>.gz.<ext>
```



At runtime the OWF Web server will use the versioned and compressed bundle files. If the browser supports **GZIP** compression the compressed bundle file will be used, otherwise the minified bundle file will be used.

## 8.4 Toolbar Customization Walkthrough

One of the most commonly customized components of OWF is the toolbar, found at the top of the screen. For a specific implementation of OWF, it may be desirable to alter the OWF Toolbar by changing the logo or adding a new component such as a button or search box. This section discusses these modifications and puts forward the recommended approach to achieve them.

### 8.4.1 Toolbar Overview

The external toolbar object, `apache-tomcat-7.0.21/lib/js-plugins/Banner.js`, corresponds to its parent, `/js/components/banner/Banner.js`, inside the `owf.war` file. When making customizations to the toolbar, the former, external `Banner.js` should always be the file being modified.

*Note: For the purposes of this document, the term toolbar refers to the specific section of OWF that is directly above the dashboard space.*

The default, non-customized toolbar is shown below.



Figure 9: OWF Toolbar

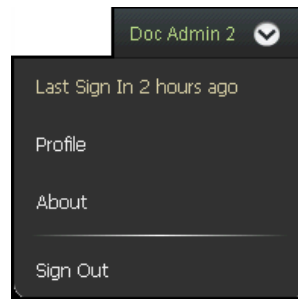
When separated into configurable sections, the toolbar components are:



Figure 10: OWF Logo Area



Figure 11: Detachable Toolbar



**Figure 12: User Menu**

## 8.4.2 Customizing the Toolbar Logo

The recommended way to modify the logo across all themes is through the external themes folder located at `apache-tomcat-7.0.21/lib/themes`. The first step is to mimic the structure of the themes folder inside the `owf.war` file by creating folders to achieve the following structure in the external themes folder: `apache-tomcat-7.0.21/lib/themes/common/images/banner/`. Inside the top-most `banner` folder, the custom logo file must be saved as `logo.png` in order to override the internal file of the same name.

## 8.4.3 Adding/Removing Toolbar Components

Through the external `Banner.js` file, developers can add Ext components, such as buttons, menus, and form fields, to the toolbar, as well as modify the appearance and functionality of existing components.

*Note: Although the toolbar's default buttons are modifiable, they provide access to core OWF functionality and should be modified with extreme caution. The OWF team does not recommend removing these buttons.*

To place custom components on the toolbar, add them to the `items` array as Ext components. To add custom components to the detached toolbar, get the floating toolbar via the `getPopOutBanner` method of the toolbar object, and then add items to its `items` array similarly.

The following example of the external `Banner.js` file shows an implementation that adds a search box component to both the docked and floating toolbars:

```

Ext.define('Ozone.plugins.Banner', {
    extend: 'Ext.AbstractPlugin',

    //Called after Banner.js initComponents() method inside the owf.war file
    init: function(cmp) {

        var banner = cmp;
        var searchAddedToPopOut = false;

        //Add a searchbox to the main banner
        this.addSearchBox(banner, banner.items.length - 1);

        //Make a reference to this object for inside the event handler
        var me = this;
        cmp.on('undocked', function() {
            //Check if the searchbox was already added to the pop out banner
            if(!me.searchAddedToPopout) {
                //Get the pop out banner
                var popOutBanner = banner.getPopOutBanner();

                //Add the search box to the floating banner only after
                //the undock event because prior it may not exist.
                me.addSearchBox(popOutBanner, popOutBanner.items.length - 1);

                me.searchAddedToPopout = true;
            }
        });
    },

    //Function added to add a searchbox to any passed in component at the given position.
    addSearchBox: function(cmp, position) {
        cmp.insert(position, {
            xtype: 'searchbox', //OWF Custom Search Box Component
            cls: 'custom-searchbox',
            style: {
                margin: 5
            },
            listeners: {
                searchChanged: {
                    fn: function(cmp, value) {
                        var trimmedVal = Ext.String.trim(value);
                        if (trimmedVal.length > 0) {
                            alert("You searched on '" + trimmedVal + "'.");
                        }
                    },
                    scope: this
                }
            }
        });
    }
});

```

### 8.4.4 Customizing the Toolbar User Menu

The User Menu is represented in the image below. It contains the username, last sign-in date, product information and Sign Out feature. The User Menu is defined inside the `owf.war` file as `/js/components/button/UserMenuButton.js`.



**Figure 13: Drop-down User Menu**

By default, the User Menu is not directly externalized with its own file in the `js-plugins` folder, but it is accessible externally via the `js-plugins/Banner.js` file by the following method:

```
Ext.define('Ozone.plugins.Banner', {
    extend: 'Ext.AbstractPlugin',

    init: function(cmp) {

        var banner = cmp;

        //Get the UserMenuButton object
        var userMenuButton = banner.items.get("userMenuBtn");
    }
});
```

The User Menu is configurable to add or remove items from it by modifying its `items` array. The items defined in this array are not arbitrary Ext components, but instead are custom objects that can contain the following properties:

**Table 13: Custom Object Properties for a User Menu Button Item**

Property	Description
<code>clickable: boolean</code>	If true, the element is clickable and keyboard-focusable and the and function registered as handler fires when it is clicked. (Default: true)
<code>handler: function</code>	A JavaScript function to execute when the element is clicked.
<code>id: String</code>	Becomes the HTML id of the node that this element creates.
<code>spacer: boolean</code>	If true, all other properties are ignored and a vertical spacer element is added to the menu. (Default: false)
<code>text: String</code>	The text that is displayed on this element in the menu.

## 8.5 Sample Customization

A fully customized toolbar is shown in the image below. All code changes, along with developer notes can be used as examples when trying to modify installations of OWF. In the following example, the OWF logo changed and a search box was added.



Figure 14: Customized Toolbar

### 8.5.1 Custom CSS

To customize the toolbar CSS:

- If the change applies to all themes: modify the following stylesheet  
`owf.war/themes/common/stylesheets/_banner.scss`
- If the change is theme specific: modify the following file  
`owf.war/themes/<theme_name>.theme/sass/<theme_name>.scss`

## 8.6 Debugging JavaScript/CSS Problems

OWF may be configured to not use JavaScript and CSS bundling and compression. Disabling this feature is useful for debugging because the source JavaScript and CSS will be included into the page instead of the bundles. To disable this feature add the line below to `OwfConfig.groovy` and restart OWF.

```
uiperformance.enabled = false
```

It is also possible to disable the JavaScript and CSS bundles at runtime in the browser. To disable the bundling and compression dynamically add `debug=true` to the OWF URL. See below:

```
https://localhost:8443/owf/?debug=true
```

*Note: If the OWF URL returns an error, it may have appended the dashboard id to include a GUID number. If this error is returned, try adding `#guid=` and the GUID number after `true`.*

*For example: `https://localhost:8443/owf/?debug=true#guid=123456789`*

## Appendix A Upgrading OWF

### A.1 Upgrading to OWF 7

*Note: Version 3.5.0 changed the way that OWF handles URLs. Bookmarks, favorite places, and locations of sample widgets which have been created or carried over from previous versions of OWF will no longer load correctly. If upgrading from a version of OWF prior to 3.5.0, the OWF team suggests that users log into OWF via the main URL, load the dashboards which are to be bookmarked, and re-save them. Previous bookmarks can be deleted.*

#### 1) Backup everything:

Before starting the upgrade, backup the entire deployment of OWF and the corresponding database. Make sure all custom override configuration files have been included in the backup (In Tomcat, they are normally located in the `/lib` directory).

#### 2) Install OWF:

The following example shows how an administrator might copy and unzip OWF from the bundle on **\*nix** operating systems:

```
cp OWF-bundle-7-GA.zip/opt/.  
cd /opt  
unzip OWF-bundle-7-GA.zip
```

The following example shows how an administrator might copy and unzip OWF from the bundle on **Windows** operating systems:

- a) Create a new directory from where OWF will be run. This can be done via the *Windows* UI or the command prompt.
- b) Copy **OWF-bundle-7-GA.zip** to the new directory created in step a.
- c) Right-click on **OWF-bundle-7-GA.zip**, and select “open,” “explore” or the command for the system’s default zip/unzip program.
- d) Unzip/unpack the bundle into the new directory created in step a.

The use of the bundled deployment archive provides all of the necessary mechanisms to deploy and run the Tomcat Web container on any Java 1.6+ enabled system. If upgrading from a version of OWF prior to 3.5.0, please seek appropriate documentation for the specific build in question.

#### 3) Upgrade database:

Before starting the database upgrade, shut down the older version of OWF’s server. Then run the upgrade script(s) that corresponds to the database in use. The scripts referenced below, which update from version 6.0.0, will also upgrade version 6.0.1, as well. The upgrade scripts for the current release are:

```
dbscripts\MySQLPrefsUpgrade_v6.0.0_v7.0.0.sql
dbscripts\OraclePrefsUpgrade_v6.0.0_v7.0.0.sql
dbscripts\PostgreSQLPrefsUpgrade_v6.0.0_v7.0.0.sql
dbscripts\SQLServerPrefsUpgrade_v6.0.0_v7.0.0.sql
```

*Note: If updating with MySQL, be sure to modify the .sql script (mentioned above) with the appropriate schema name. For example:*

```
use OWF;
```

4) Reconfigure and re-apply customizations:

The following override files were modified in OWF 7. Any changes made to this file under earlier versions of OWF will need to be manually merged with the newly deployed files. The file will then need to be moved to the **\apache-tomcat-7.0.21\lib** directory:

```
\apache-tomcat-7.0.21\lib\OwfConfig.groovy
\etc\override\CASSpringOverrideConfig.xml
```

5) Below is an aggregate list of all of the imports needed for the widget APIs:

```
<script type="text/javascript" src="js/dojo-1.2.3-windowname-only/dojo/dojo.js"></script>
<script type="text/javascript" src="js/dojo-1.2.3-windowname-only/dojox/io/windowName.js"></script>
<script type="text/javascript" src="js/dojo-1.2.3-windowname-only/dojox/secure/capability.js"></script>
<script type="text/javascript" src="https://servername:port/owf/js-min/owf-widget-min.js"></script>
```

6) Replace all occurrences of **https://servername:port** with the name of the server where OWF is running, for example, **https://www.yourcompany.com:8443**. Additionally, be sure to verify that the **windowname** library paths point to the local installation.

7) If a custom keystore was deployed in a previous build, the keystore for OWF 7 will need to be manually configured in the same manner.

8) Copy any custom certificates from previous build to OWF 7. Usually this is found in **\apache-tomcat-7.0.21\certs**.

9) If custom changes were applied to a previous **owf.war** file, such as skinning.

*Note: With the upgrade to ExtJS 4.0.1, the way skinning is done has changed, using SASS and Compass to generate custom themes. In OWF 3.6.0, the OWF development team redesigned the application theme to follow this new model. The files to generate the new theme can be found in the **\web-app\themes\owf-ext-theme** directory of the exploded **owf.war** file. This theme, along with the examples on the Sencha website, can be used as guidelines for customizing the OWF theme. Also, the OWF Community Support Team can provide further guidance. Contact them at the address provided in [Appendix E: Contact Information](#).*

The OWF upgrade is now complete.

## A.2 Prior to OWF 6

There have been significant changes made to dashboards between previous versions of OWF and OWF 6. These changes demand that some conversion requirements be met if dashboards from previous versions of OWF are going to work in OWF 6.

### A.2.1 Dashboard Changes

The underlying structure of user and group dashboards has changed dramatically. In OWF 6 dashboards use a finite set of panes that can be combined through a graphical designer in a myriad of ways. This allows users to develop views that exceed the complexity and flexibility of dashboards from previous versions. While the new Dashboard Designer can be used to mimic previous dashboard styles, there are fundamental changes that may prevent pixel-perfect translations from pre-OWF 6 dashboards to OWF 6 dashboards. As always, **full backups** of an OWF database should be performed and saved prior to conversion the OWF 6. Moreover, the database upgrade from OWF 5 to OWF 6 is more complex than prior upgrades.

### A.2.2 Dashboard Conversion Requirements

The database upgrade scripts provided in the OWF 6 release attempt to convert previous dashboards into OWF 6 dashboards that approximates the original behavior. Given the complexity of the conversions, there are additional requirements for running the conversion scripts in OWF 6.

For the OWF 6 upgrade, each conversion script contains scripted functions or stored procedures required to perform some of the more complicated data manipulations required by the new dashboard format. As an example, the PostgreSQL upgrade script contains PL/PGSQL code. For this reason, scripts should be executed against their host database using native tools that can handle larger scripts. Tools that attempt to parse the scripts and chunk the data based on common SQL delimiters may fail (e.g., tools that rely on single statement JDBC connections).

*Note: While these upgrade scripts generally avoid the scripting constructs available only in the latest versions of supported databases, there could be some compatibility issues with older database servers. If this is the case, the scripts may be functional with minor edits. If that is not feasible, the conversion code can be removed from the upgrade script to allow upgrading of the table structures. This will require that dashboards be recreated via the dashboard designer in OWF 6.*

### A.2.3 Dashboard Conversions

Each of the primary dashboard types from previous versions of OWF have been converted to a new style. While maintaining the useful characteristics of the dashboard types, the new formats differ slightly from their predecessors.

**Desktop Dashboard** – Desktops see the least amount of changes during the conversion. OWF 6 desktop dashboards look and act as their predecessors.



**Portal Dashboard** – Portals have a number of visual and functional differences from their counterparts. Single, double, and triple column portals from previous versions of OWF will convert to OWF 6. The major visual differences include a lack of padding between widgets. Also, each column will scroll independently when widgets extend below the view of the browser. One functional change is the inclusion of splitters. The edges of each column allow for resizing.

**Accordion Dashboard** – Accordions have been split into two accordion panes in OWF 6. Widgets on the left side of an older accordion will appear as they did in previous versions of OWF, displayed within a single column accordion pane. Widgets on the top and bottom of the right column of a previous version of OWF's dashboards have been placed in their own accordion pane. This allows a user to add additional widgets on the right side of an accordion dashboard in OWF 6.

**Tabbed Dashboard** – Tabbed dashboards translate closely from previous versions of OWF to OWF 6 with one major functional change—they no longer support button widgets. During the conversion to OWF 6, any button widgets will be placed in normal tabs alongside any previous tabbed widgets.

## A.2.4 Dashboard Inspection and Validation

An OWF 6 administrator should verify the conversion of major dashboards through visual inspection prior to rolling out an upgraded instance to a user base. This will allow the administrator ample time to adjust to the changes and better inform their users. Minor changes to dashboards may be affected by editing the dashboard and using the new visual designer features. However, if major problems are discovered upon inspection or during the upgrade itself, normal support channels may be consulted. To aid the diagnosis of major problems, OWF 6 includes a basic validation utility. The validation utility may be used to discern potential problem dashboards in large installations or facilitate discussions with community support.

*Note: The upgrade scripts create basic copies of the **dashboard** and **dashboard\_widget\_state** tables, named **dashboard\_backup** and **dashboard\_widget\_state\_backup**, respectively. These tables are used by the validation utility and can be deleted after the upgrade is verified and validated*

The validation utility can be found in the following location:

`owf-server-bundle/etc/tools/dbvalidation.zip`

The file contains an executable JAR which connects to an OWF database through JDBC and validates that previous versions of OWF dashboards have been successfully converted to OWF 6 style.

Instructions:

- 1) Extract the **dbvalidation.zip** to a temporary directory.
- 2) Change directory to that temporary directory.
- 3) Open `dbvalidation.jar/META-INF/MANIFEST.MF` file and add to Class-Path property to include JDBC driver on the classpath.

*NOTE: OWF does not provide a JDBC driver for any database. Obtain the appropriate JDBC driver and place it into the Web server's **dbvalidation.jar/lib** directory. Refer to Using **JAR** files: The Basics for instructions on how to extract and compress a **JAR**.*

**Class-Path: lib/groovy-all-1.8.8.jar lib/{ jdbc-driver}.jar**

- 4) Save **MANIFEST.MF** file. Then, execute the following line:

```
java -jar dbvalidation.jar
```

- 5) There will be a prompt to enter the database URL, username, password and class name of the database driver.
- 6) Upon completion, any encountered errors will be logged to console.

## Appendix B Clustering an OWF Environment

This following section details how to modify Tomcat and Apache HTTP Server configurations for clustering OWF. Configuring OWF in a clustered environment tends to differ widely between specific web application servers. Be sure to refer to an individual application server's documentation for specific details on how it should be configured for clustering.

Find general installation instructions and configurations required for Tomcat clustering at: <http://tomcat.apache.org/tomcat-6.0-doc/cluster-howto.html>.

For purposes of this document, assume that the Apache HTTP Server and Load Balancer have been installed on a host named **cluster** and OWF is on two separate hosts named **node1** and **node2**.

### B.1 Tomcat Configuration

Navigate to `/apache-tomcat-7.0.21/conf/server.xml`, and make the following changes:

- 1) Add the **jvmRoute** attribute to the **Engine** element. The attribute should be a string that uniquely identifies the node in the cluster:

```
<Engine name="Catalina" defaultHost="localhost" jvmRoute="node1">
```

- 2) Uncomment the **Cluster** element that is in the **Engine** element:

```
<Cluster className="org.apache.catalina.ha.tcp.SimpleTcpCluster"/>
```

- 3) Comment out any **Connector** elements with their protocol attribute set to HTTP/1.1 and uncomment the **Connector** element with its protocol set to AJP/1.3. Use port="8009" and redirectPort="8443":

```
<Connector port="8009" protocol="AJP/1.3" redirectPort="8443"/>
```

*Note: For max performance, uncomment the **AprLifecycleListener** (this isn't strictly clustering related).*

The **server.xml** file must include:

```
<?xml version='1.0' encoding='utf-8'?>
<Server port="8005" shutdown="SHUTDOWN">

  <Listener className="org.apache.catalina.core.AprLifecycleListener" SSLEngine="on" />
  <Listener className="org.apache.catalina.core.JasperListener" />
  <Listener className="org.apache.catalina.core.JreMemoryLeakPreventionListener" />
  <Listener className="org.apache.catalina.mbeans.GlobalResourcesLifecycleListener" />
  <Listener className="org.apache.catalina.core.ThreadLocalLeakPreventionListener" />

  <Service name="Catalina">

    <Connector port="8009" protocol="AJP/1.3" redirectPort="8443" />
    <Engine name="Catalina" defaultHost="localhost" jvmRoute="node1">

      <Cluster className="org.apache.catalina.ha.tcp.SimpleTcpCluster"/>

      <Host name="localhost" appBase="webapps" unpackWARs="true" autoDeploy="true"></Host>

    </Engine>
  </Service>
</Server>
```

## B.2 OWF Configuration

Copy **etc/override/ehcache.xml** into **apache-tomcat-7.0.21/lib**.

Configure **apache-tomcat-7.0.21/lib/OzoneConfig.properties** to use the host and port through which clients will be accessing OWF and not the host and port of this particular node:

```
ozone.host = cluster
ozone.port = 8443
```

## B.3 OS Configuration

For best performance, make sure the Apache Portable Runtime (APR) and Apache Tomcat Native libraries are installed on the node servers. The procedure is optional and installation varies by OS. Accordingly, be sure to refer to <http://tomcat.apache.org/native-doc/> and <http://tomcat.apache.org/tomcat-6.0-doc/apr.html> for information on setting up APR/Native on a specific OS.

*Note: If the associated load balancer and node servers are behind a firewall, make sure all relevant ports are open for TCP/UDP (Examples: 8009, 8080, 8443, etc).*

## B.4 Apache HTTP / Load Balancer Configuration

In the following installation example, Apache Web Server (httpd) 2.x is used. Refer to <http://httpd.apache.org/> for download access, installation instructions, and configuration information.

- 1) Install **mod\_jk** (The Apache Tomcat Connector and load balancer). Please refer to <http://tomcat.apache.org/connectors-doc/index.html> for download, install, and configuration.

Depending on the distribution installed, the exact layout of configuration files vary, but the following changes need to be made to the server's httpd configuration:

- 2) Change the Listen configurations to 8080 and 8443, instead of 80 and 443:

```
Listen 8080
Listen 8443
```

- 3) Use a LoadModule directive to load mod\_jk:

```
LoadModule jk_module modules/mod_jk.so
```

- 4) Configure mod\_jk with the following properties:

- **JkWorkersFile** - This should be the location of a **workers.properties** file (described below)
- **JkLogLevel info** - Can be set to '**debug**' if extra logging is desired
- **JkOptions +ForwardDirectories** - allows paths like <https://localhost:8443/owf/> to work
- **JkMount /owf\* balancer** - tells **mod\_jk** to forward requests for **/owf** to the worker named **balancer** (defined in **workers.properties**)
- **JkMount /cas\* node1** - tells **mod\_jk** to forward requests for **/cas** to the worker named **node1** (defined in **workers.properties**)

- 5) Make sure that **mod\_ssl** gets loaded:

```
LoadModule ssl_module modules/mod_ssl.so
```

- 6) Configure SSL with the following properties:

- **SSLEngine on**
- **SSLCertificateFile** - the certificate for the server
- **SSLCertificateKeyFile** - the private key for the server
- **SSLCertificateChainFile** - the CA chain for the server
- **SSLCACertificateFile** - the CA used to validate client certs

- **SSLVerifyClient optional** - for behavior equivalent to tomcat's `clientAuth="want"` (can be changed as desired)
- **SSLOptions +ExportCertData** - needed for OWF to obtain cert information

7) Create a **workers.properties** file, which needs to be referenced in the **JkWorkersFile** property described above.

The names of workers need to be the same as the **jvmRoute** that was set on the corresponding node. The **worker.list** entry defines which workers are accessible from within the Apache server's httpd configuration.

The sample below includes three workers: the actual load balancer (whose type is set to 'lb') and a worker for each node.

```
#Expose the balanced worker, and also owfcluster02 so we can route
#all CAS requests directly to it (not clustering CAS)
worker.list=balancer,node1
worker.balance.type=lb
worker.balancer.balance_workers=node1,node2
worker.node1.type=ajp13
worker.node1.host=node1
worker.node1.port=8009
worker.node2.type=ajp13
worker.node2.host=node2
worker.node2.port=8009
```

## Appendix C Deploying OWF to an Existing Tomcat Instance

The OWF development team uses Tomcat 7.0.21 for all internal testing. The following instructions explain how to deploy a new instance of OWF to an already established Tomcat instance. For the purposes of documentation, we have named the tomcat instances “production” and “temporary.”

- 1) Unzip the OWF bundle into a directory called `/owf-temp`. Some of the files from this bundle will be used in the Tomcat installation named production.
- 2) Copy `/owf-temp/apache-tomcat-7.0.21/bin/setenv.bat` into the corresponding folder in the production Tomcat installation.
- 3) Copy `/owf-temp/apache-tomcat-7.0.21/webapps/owf.war` to the production Tomcat webapps directory.
- 4) If the security bundle requires CAS, copy `/owf-bundle/apache-tomcat-7.0.21/webapps/cas.war` to the production Tomcat webapps directory.
- 5) To use the sample key store and client certificate in a local development or test environment, copy the `/owf-temp/apache-tomcat-7.0.21/certs` directory to the production Tomcat `certs` directory (This may need to be created.).
- 6) Modify the production Tomcat file with the following configurations. Ensure that the file contains the “**Connector**” configuration (In the example below, port 8443 has been used.):

```
<Connector port="8443" protocol="HTTP/1.1" SSLEnabled="true"
    maxThreads="150" scheme="https" secure="true"
    keystoreFile="certs/keystore.jks" keystorePass="changeit"
    clientAuth="want" sslProtocol="TLS" />
```

The default security module uses the user’s client certificate for authentication if it is available. The default security will revert to CAS if the certificate is missing or invalid.

To use the default security module (PKI only security) OR a custom security module with a user’s client certificate for authorization, set the `clientAuth` to **want** or **true**. True requires a client certificate like the PKI only security module. It should only be used if a fallback authentication scheme such as CAS is unnecessary.

Set the key store and trust store parameters to the values that are appropriate for the production environment. The example above is using the default key store shipped with OWF. It is **only** appropriate for local development and testing environments.

- 7) Start production Tomcat which allows it to unpack the **WAR** files.

- 8) Stop Tomcat.
- 9) Copy the following from the temporary **apache-tomcat-7.0.21/lib** directory in the distribution bundle to the production Tomcat **webapps/owf/WEB-INF/classes** directory:
  - **OwfConfig.groovy**
  - **OwfSecurityContext.xml**
  - **Owf-override-log4j.xml**
  - **OzoneConfig.properties**
  - **Ozone-security-beans** directory
- 10) To deploy CAS, copy **/owf-temp/etc/override/CASSpringOverrideConfig.xml** to the production Tomcat **webapps/cas/WEB-INF/classes** directory.
- 11) If the sample security modules are in use, copy **/owf-temp/apache-tomcat-7.0.21/lib/users.properties** to the *production /lib* directory.
- 12) Copy the themes, help, and js-plugins directories from temporary **apache-tomcat-7.0.21/lib** folder to the production **apache-tomcat-7.0.21/lib** folder.
- 13) Start Tomcat.



## Appendix D Known Issues

### D.1 Browser Issues

Launching any of the editors (as well as many JavaScript-heavy widgets) in certain versions of Internet Explorer consumes system memory that won't be flushed or released until Internet Explorer is exited and restarted. Again, this is currently only an Internet Explorer issue.

### D.2 User Interface Issues

**Changes in screen resolution may render widgets unviewable.**

The positioning of the widgets is absolute. This means that when changing from a larger monitor to a smaller monitor, or when changing from a higher screen resolution to a lower screen resolution, some floating windows may be either partially or fully off the viewable region of the screen. Currently there is no remedy for this issue; however, closing and re-adding the widgets (from the Launch Menu) will reset its position and, therefore, render it viewable again.

**Large widgets in Accordion layout may cause unexpected behavior.**

The accordion layout currently may enter an unexpected state when widgets with height exceeding the maximum screen real estate are added to the right upper region. This can be remedied if a system administrator modifies the dashboards state. This issue will be fixed in a future release.

**Internet Explorer users may experience degraded performance.**

The latest release of Sencha's ExtJS 4 JavaScript framework is known to have performance issues in Internet Explorer browsers. The Sencha team is actively working to release a patch to address these issues. Once the patch is released, the OWF team will integrate it into the codebase.

### D.3 Widget Technology Issues

**Java Applet Widgets always sit on top of other Widgets (z-index issue).**

There is a documented issue with Java applets not obeying proper z-indexing, the effect being that an applet will appear over everything else in OWF:

[http://bugs.sun.com/bugdatabase/view\\_bug.do;jsessionid=6a434ce1408465ffffff87e84af5d233a32?bug\\_id=6646289](http://bugs.sun.com/bugdatabase/view_bug.do;jsessionid=6a434ce1408465ffffff87e84af5d233a32?bug_id=6646289)

**Flex Widgets always sit on top of other widgets (z-index issue).**

Flex has a known issue with DHTML and z-index ordering. The default wmode for flex is window with two other options; transparent and opaque. In order for Flex Widgets to adhere to the proper z-index ordering the wmode must be set to something other than the default.

**Silverlight Widgets always sit on top of other widgets (z-index issue).**

Silverlight has a known issue with DHTML and z-index ordering. The default windowless mode for Silverlight is false. In order for Silverlight Widgets to adhere to the proper z-index ordering the windowless mode must be set to true.

**Google Earth Plugin Widgets always sit on top of other widgets (z-index issue).**

The Google Earth browser plugin currently does not conform to the normal z-index rules of html. This will cause the plugin to remain on top of any other floating windows that may be on the screen. If this plugin is being used, it is recommended not to use it in the Desktop Layout. It can be used in any of the other static layouts but windows launched from the toolbars may be rendered unreachable by the plugin.

## **D.4 Database Issues**

***Oracle scripts should be executed via the SQL\*Plus command line.***

There have been reported issues using Oracle's browser-based administration console to upload and run the OWF create and update scripts. Stray characters are getting inserted into the database, causing **JSON** parsing errors at runtime. Executing the scripts through the SQL\*Plus command line utility eliminates this issue.

## Appendix E Contact Information

### E.1 Discussion Group

The Ozone Developers Discussion Group is hosted through Google Groups at <http://groups.google.com/group/ozone-developers>. This forum is for the distribution of release announcements, Q&A related to OWF and for additional inquiries about widgets and features being developed across the user base. Access to the group can be gained by requesting an invitation at <http://groups.google.com/group/ozone-developers> or by contacting the Community Support Team at [goss-support@owfgoss.org](mailto:goss-support@owfgoss.org).

### E.2 Additional POCs

For information about the Ozone Widget Framework or access to its resources, please email [goss-support@owfgoss.org](mailto:goss-support@owfgoss.org). Additional resources can be found at <http://owfgoss.org>.